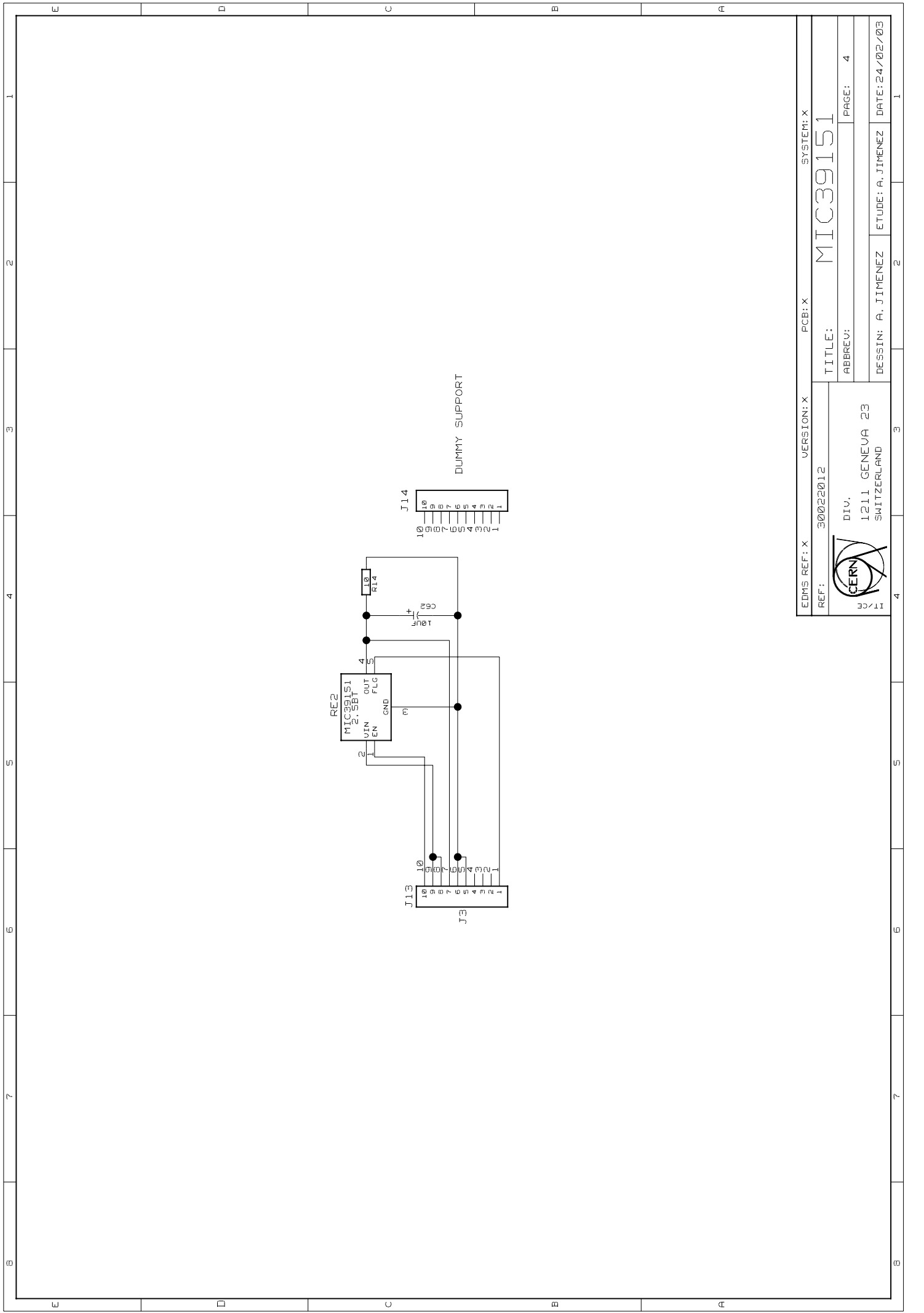

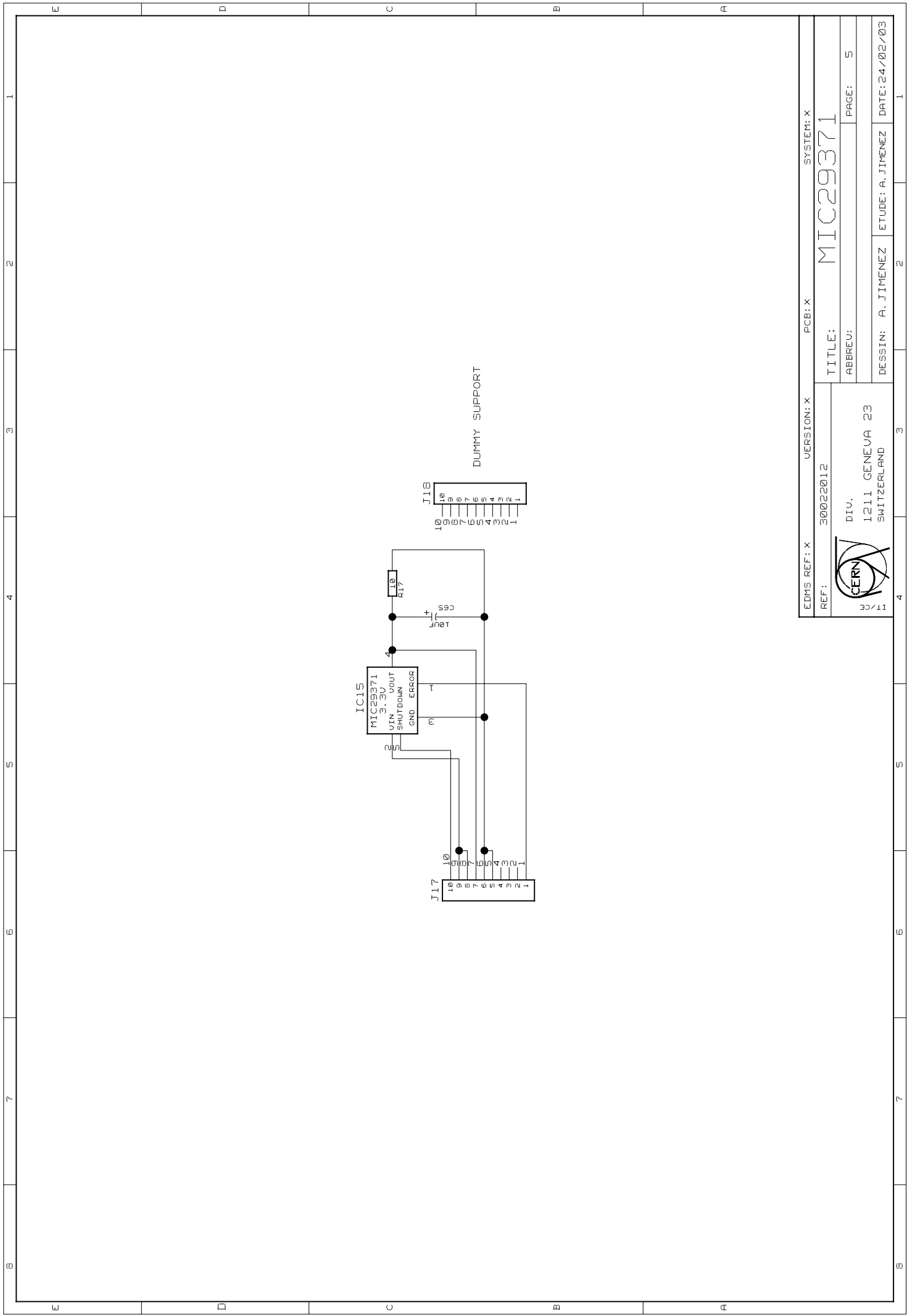


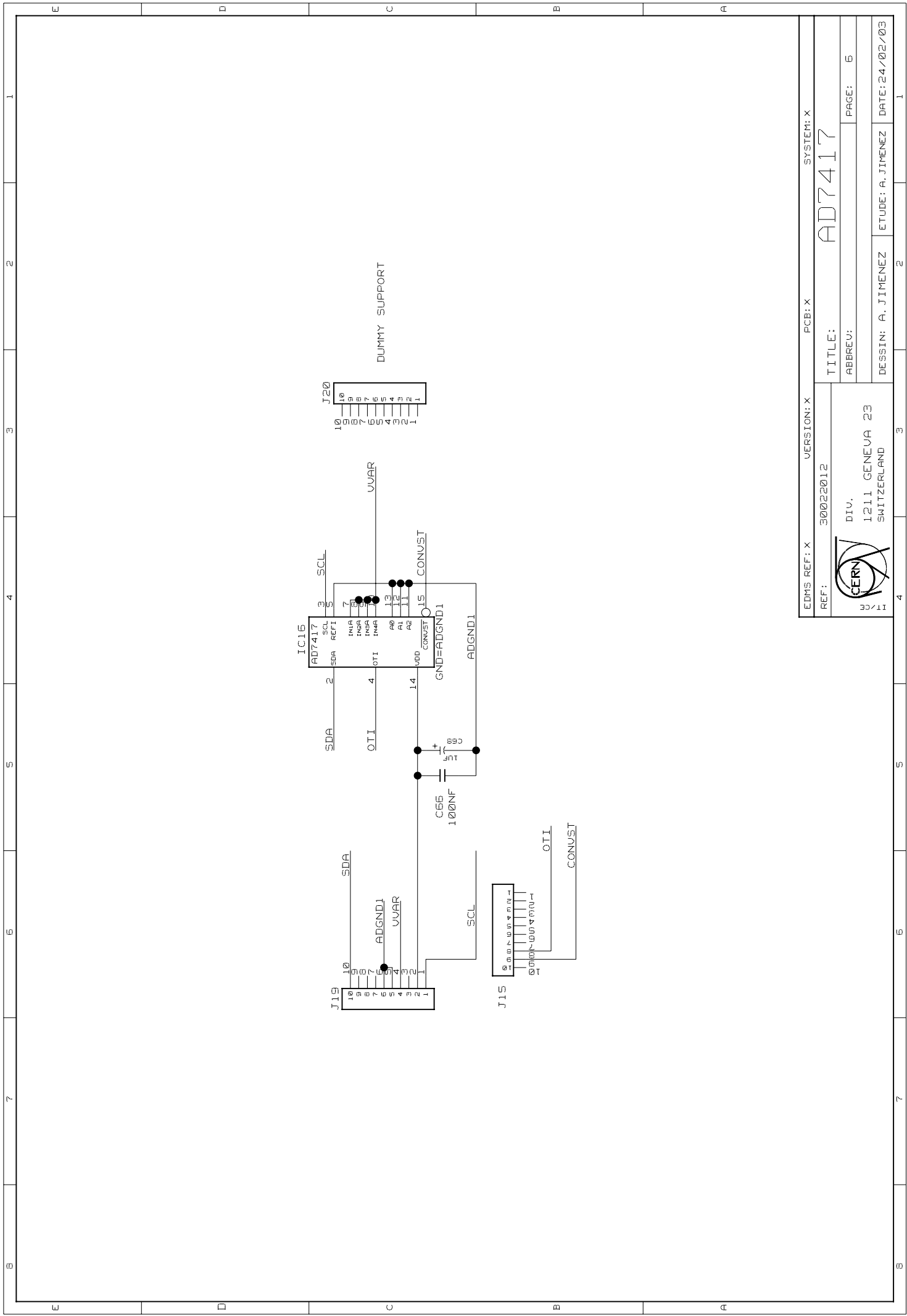
REC-CARRIER-3	REC-CARRIER-4	REC-CARRIER-1	REC-CARRIER-2	REC-CARRIER-1	REC-CARRIER-2	REC-CARRIER-1	REC-CARRIER-2	REC-CARRIER-1	REC-CARRIER-2	REC-CARRIER-1	REC-CARRIER-2	REC-CARRIER-1	REC-CARRIER-2	REC-CARRIER-1	REC-CARRIER-2
MC28151	MC28371	MC28151	MC28371	MC28151	MC28371	MC28151	MC28371	MC28151	MC28371	MC28151	MC28371	MC28151	MC28371	MC28151	MC28371
REF-CARRIER-1	REF-CARRIER-2	REF-CARRIER-1	REF-CARRIER-2	REF-CARRIER-1	REF-CARRIER-2	REF-CARRIER-1	REF-CARRIER-2	REF-CARRIER-1	REF-CARRIER-2	REF-CARRIER-1	REF-CARRIER-2	REF-CARRIER-1	REF-CARRIER-2	REF-CARRIER-1	REF-CARRIER-2
U1414B	U1414B	U1414B	U1414B	U1414B	U1414B	U1414B	U1414B	U1414B	U1414B	U1414B	U1414B	U1414B	U1414B	U1414B	U1414B
OP3483	OP3483	OP3483	OP3483	OP3483	OP3483	OP3483	OP3483	OP3483	OP3483	OP3483	OP3483	OP3483	OP3483	OP3483	OP3483
CLOCK-CARRIER-1	CLOCK-CARRIER-2	CLOCK-CARRIER-1	CLOCK-CARRIER-2	CLOCK-CARRIER-1	CLOCK-CARRIER-2	CLOCK-CARRIER-1	CLOCK-CARRIER-2	CLOCK-CARRIER-1	CLOCK-CARRIER-2	CLOCK-CARRIER-1	CLOCK-CARRIER-2	CLOCK-CARRIER-1	CLOCK-CARRIER-2	CLOCK-CARRIER-1	CLOCK-CARRIER-2
U1414B	U1414B	U1414B	U1414B	U1414B	U1414B	U1414B	U1414B	U1414B	U1414B	U1414B	U1414B	U1414B	U1414B	U1414B	U1414B
U1414B	U1414B	U1414B	U1414B	U1414B	U1414B	U1414B	U1414B	U1414B	U1414B	U1414B	U1414B	U1414B	U1414B	U1414B	U1414B
U1414B	U1414B	U1414B	U1414B	U1414B	U1414B	U1414B	U1414B	U1414B	U1414B	U1414B	U1414B	U1414B	U1414B	U1414B	U1414B



EDMS REF: X	VERSION: X	PCB: X	SYSTEM: X
REF: 30022012	TITLE: MIC39151		PAGE: 4
 DIV. 1211 GENEVA 23 SWITZERLAND		ABBREV:	DATE: 24/02/03
		DESSIN: A. JIMENEZ	ETUDE: A. JIMENEZ

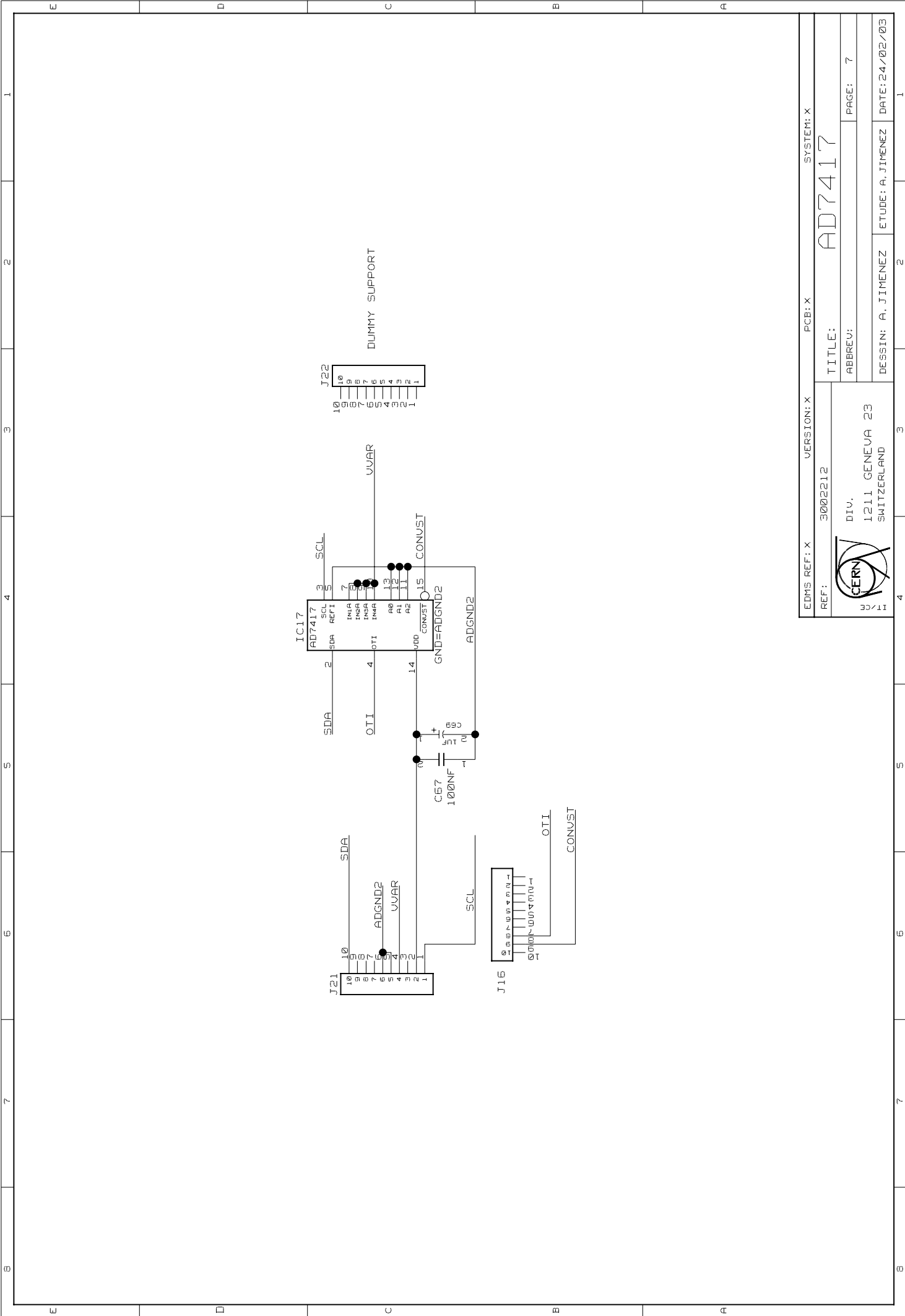



EDMS REF: X	VERSION: X	PCB: X	SYSTEM: X
REF: 30022012	TITLE: MIC29371		PAGE: 5
DIV. 1211 GENEVA 23		ABBREV:	DATE: 24/02/03
CERN		DESSIN: A. JIMENEZ	ETUDE: A. JIMENEZ
1211 GENEVA 23		DATE: 24/02/03	
SWITZERLAND			

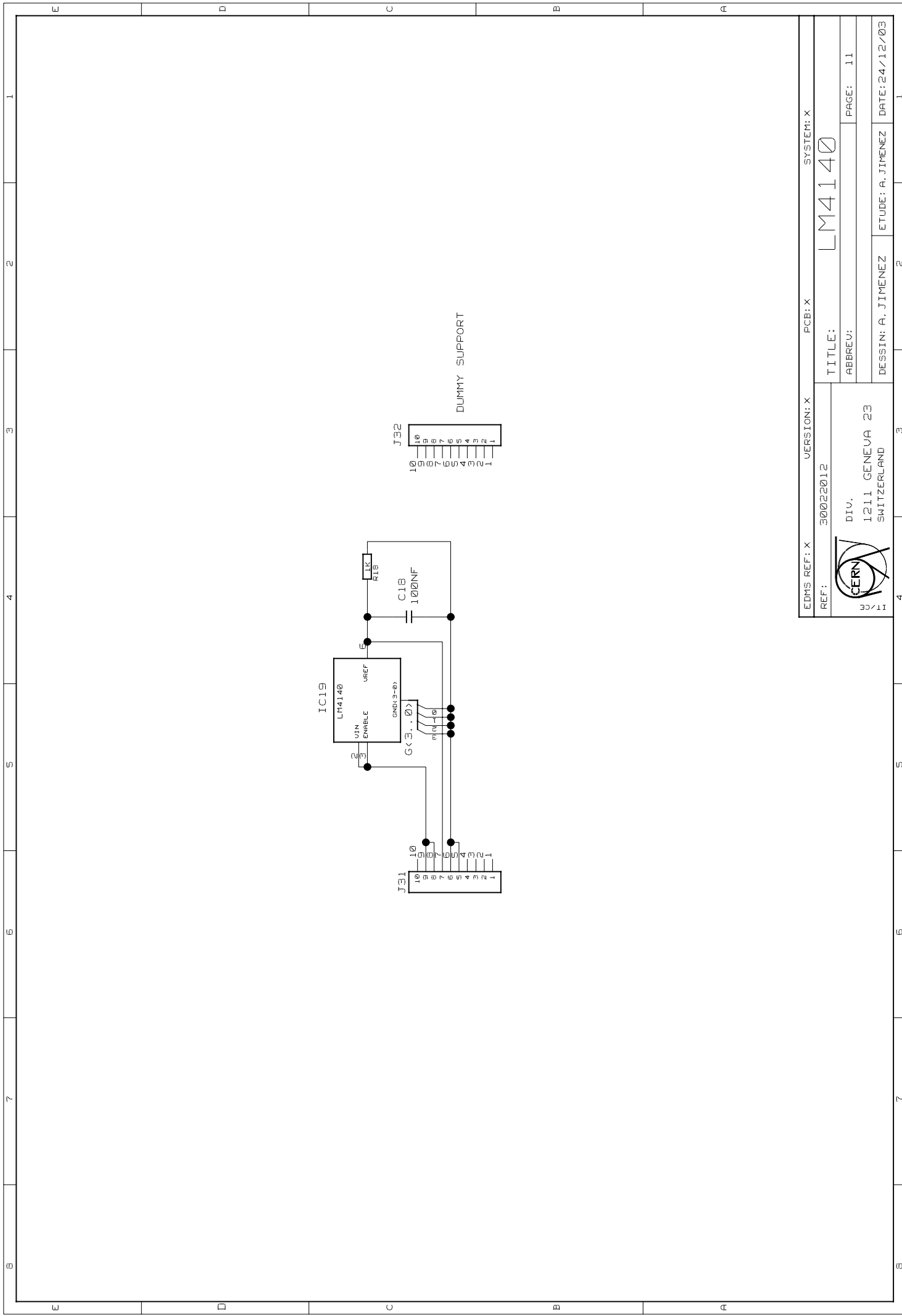



EDMS REF: X	VERSION: X	PCB: X	SYSTEM: X
REF: 30022012	TITLE: AD7417		PAGE: 6
DIV. 1211 GENEVA 23		DESIGN: A. JIMENEZ	DATE: 24/02/03
SWITZERLAND		ETUDE: A. JIMENEZ	DATE: 24/02/03

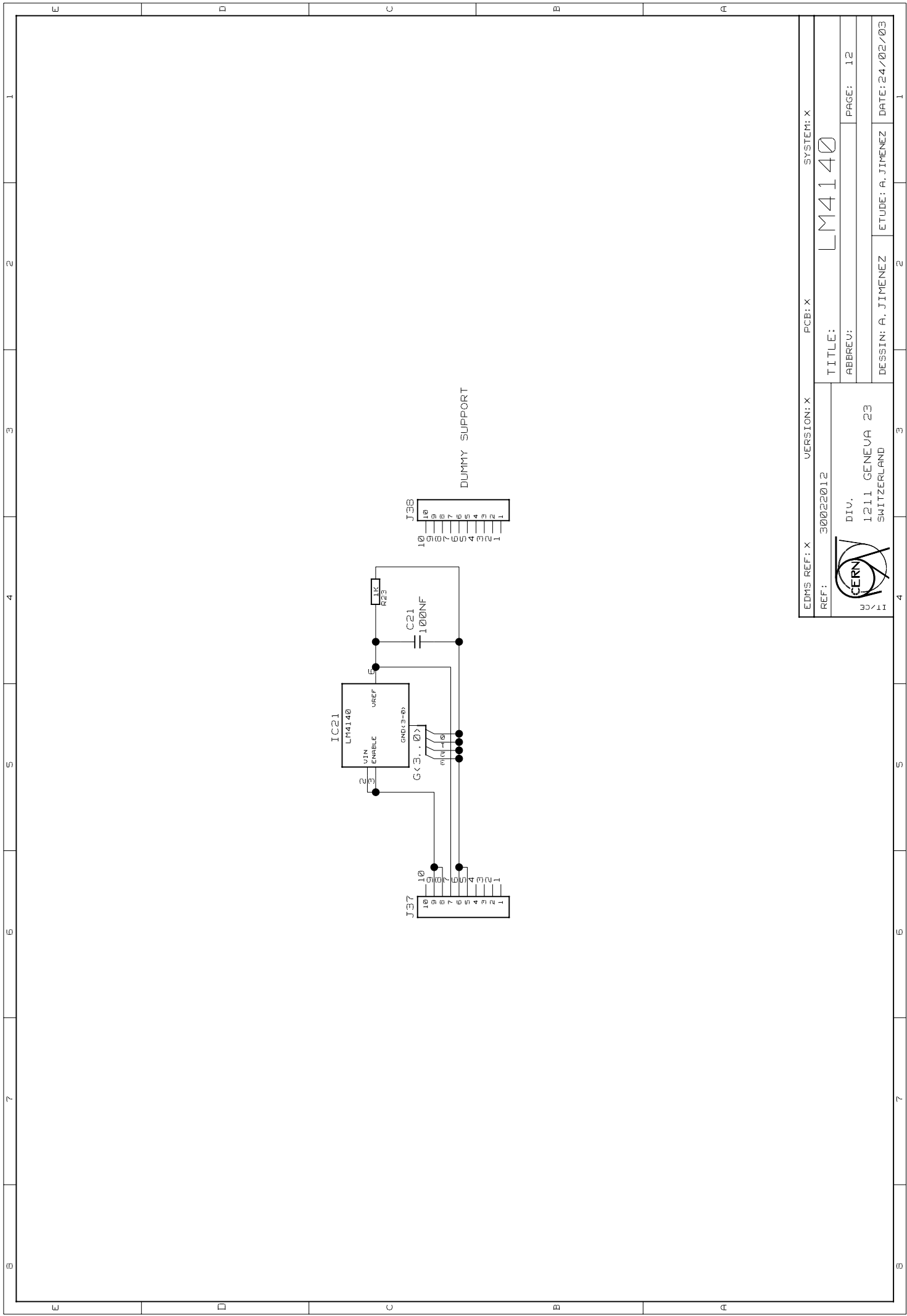




EDMS REF: X	VERSION: X	PCB: X	SYSTEM: X
REF: 3002212	TITLE: AD7417		
		ABBREV: PAGE: 7	
1211 GENEVA 23		DESSIN: A. JIMENEZ	
SWITZERLAND		ETUDE: A. JIMENEZ	
		DATE: 24/02/03	

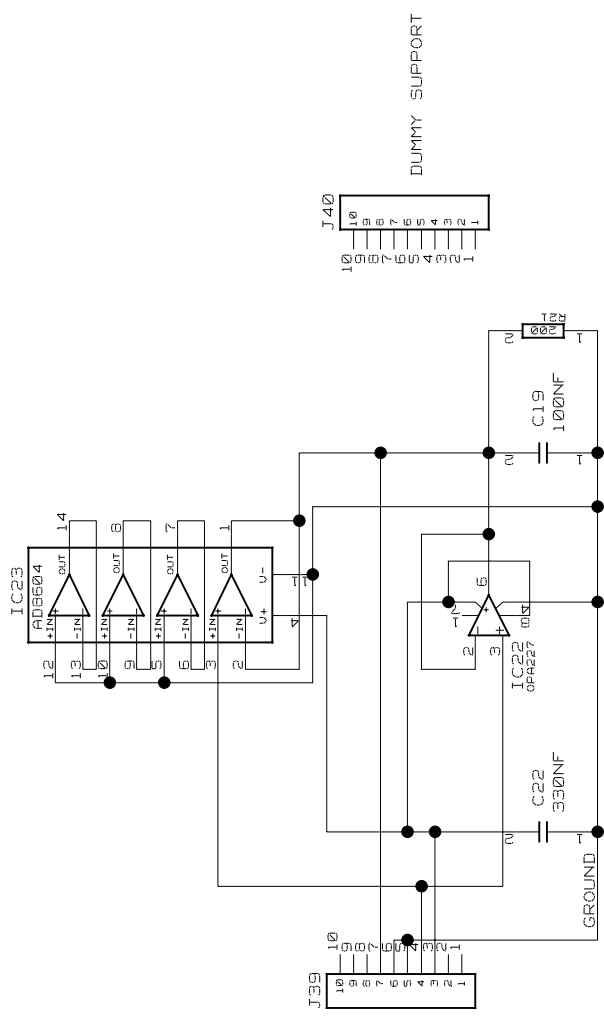


EDMS REF: X	VERSION: X	PCB: X	SYSTEM: X
REF: 30022012	TITLE: LM4140		
		ABBREV: 11	
DIV. 1211 GENEVA 23		DESSIN: A. JIMENEZ	
SWITZERLAND		ETUDE: A. JIMENEZ	
		DATE: 24/12/03	



EDMS REF: X	VERSION: X	PCB: X	SYSTEM: X
REF: 30022012	TITLE: LM4140		
	ABBREV: 12		PAGE: 12
	DESSIN: A. JIMENEZ	ETUDE: A. JIMENEZ	DATE: 24/02/03



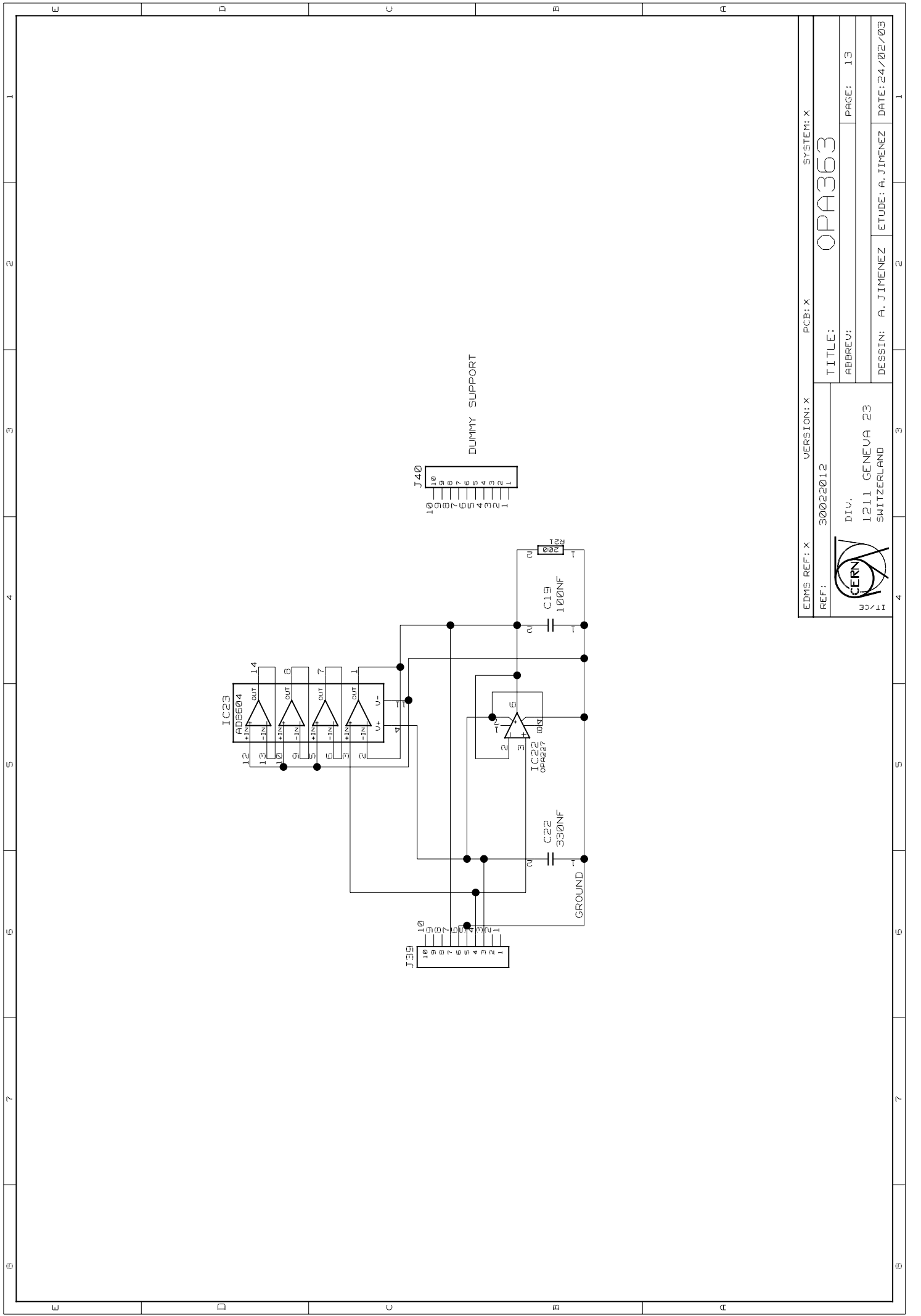


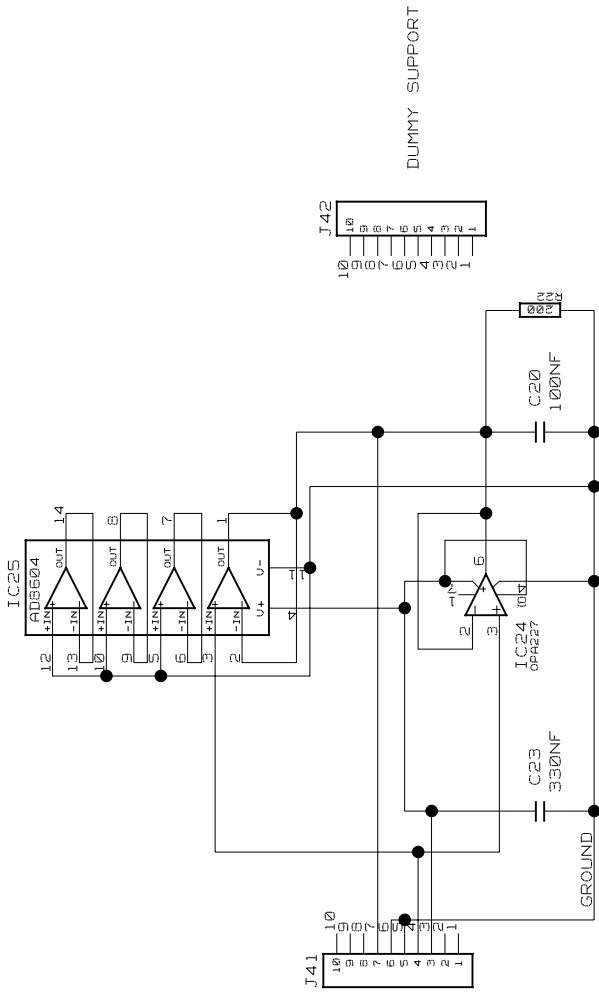
DUMMY SUPPORT

EDMS REF: X	VERSION: X	PCB: X	SYSTEM: X
REF: 30022012	TITLE: OPA363		
DIV. 1211 GENEVA 23		PAGE: 13	
SWITZERLAND		DESSIN: A. JIMENEZ	
		ETUDE: A. JIMENEZ	
		DATE: 24/02/03	



IC 17C

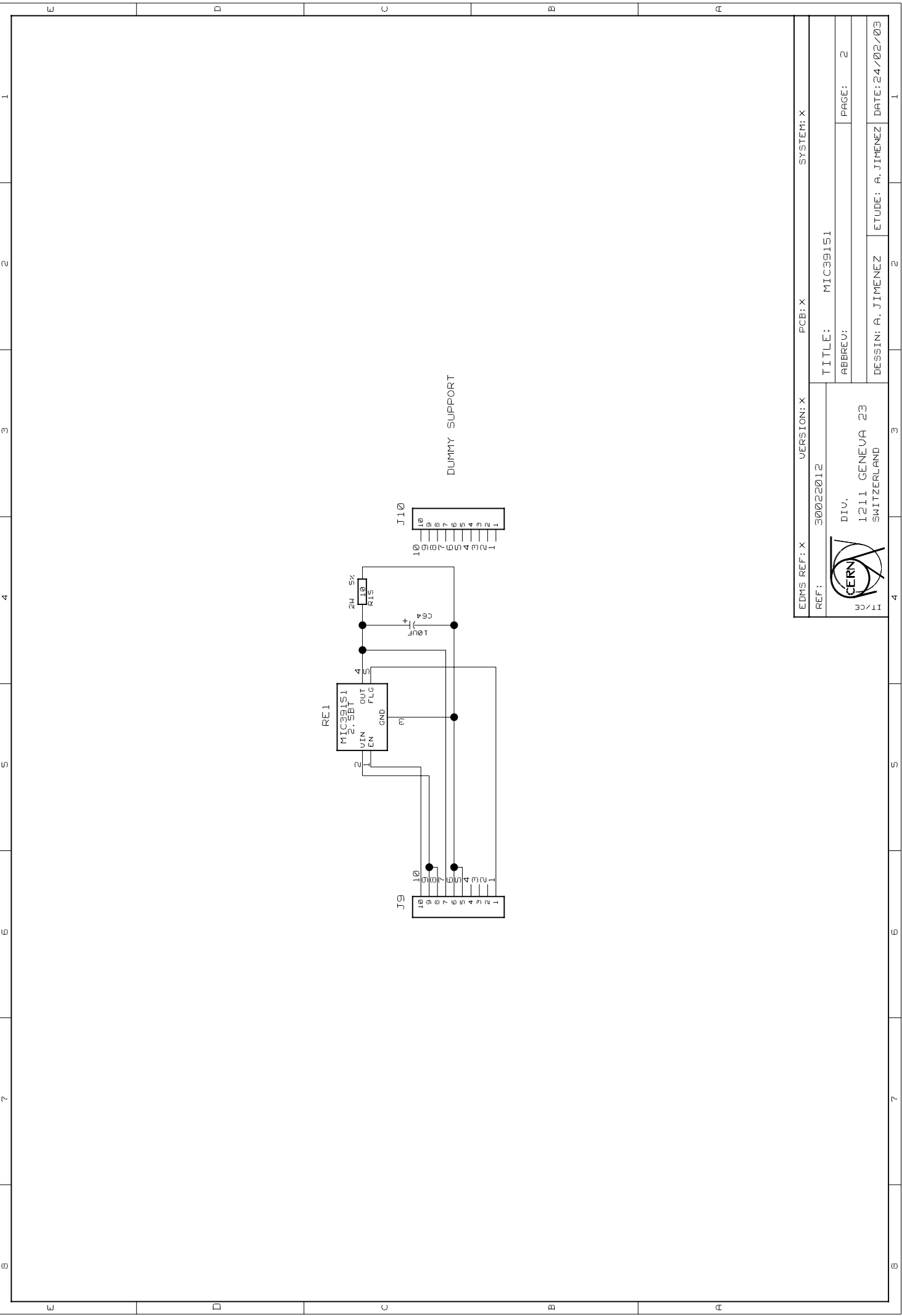




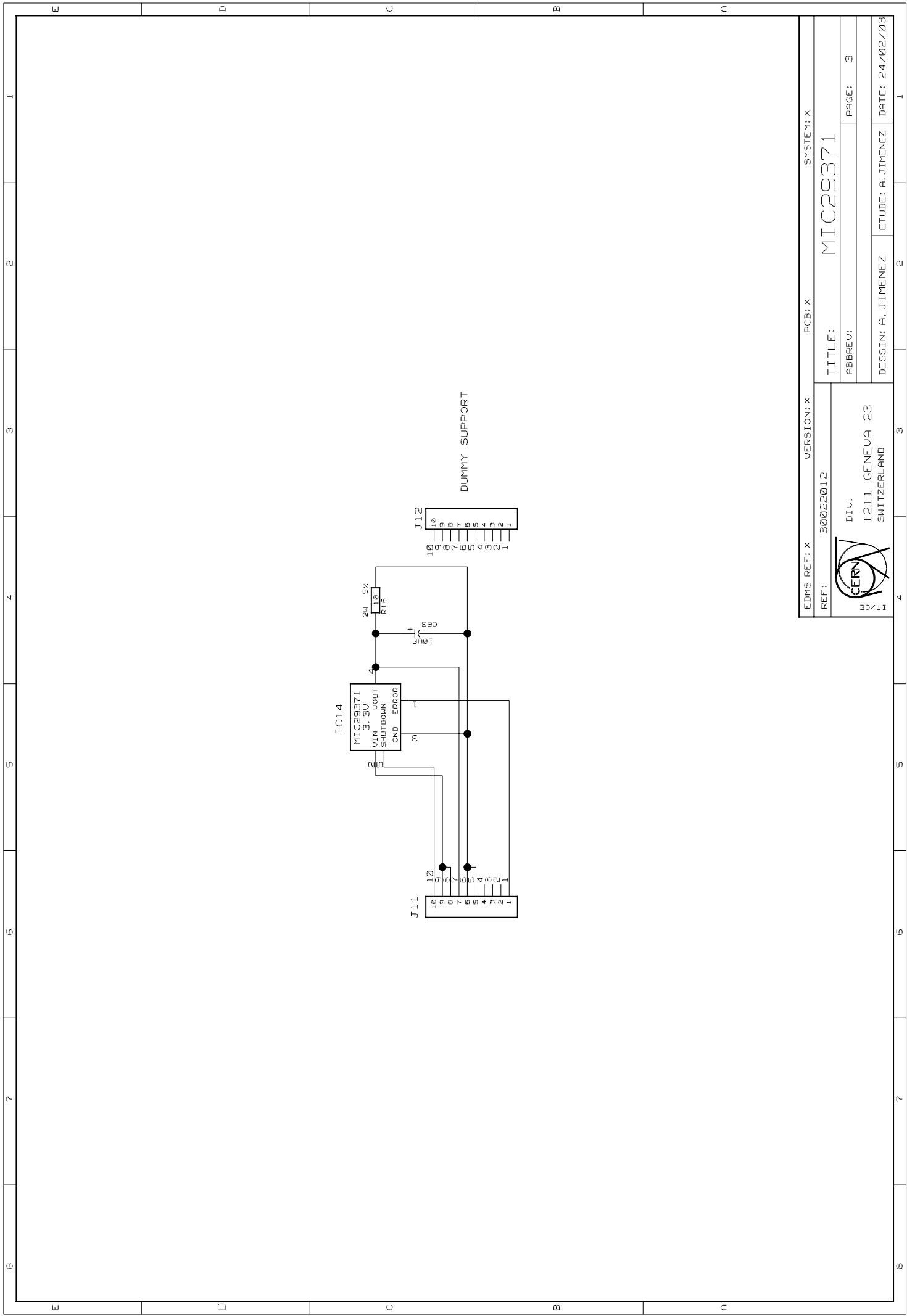
DUMMY SUPPORT

EDMS REF: X	VERSION: X	PCB: X	SYSTEM: X
REF: 30022012	TITLE: OPA363		
DIV. 1211 GENEVA 23		ABBREV:	PAGE: 14
SWITZERLAND		DESSIN: A. JIMENEZ	ETUDE: A. JIMENEZ
DATE: 24/02/03			

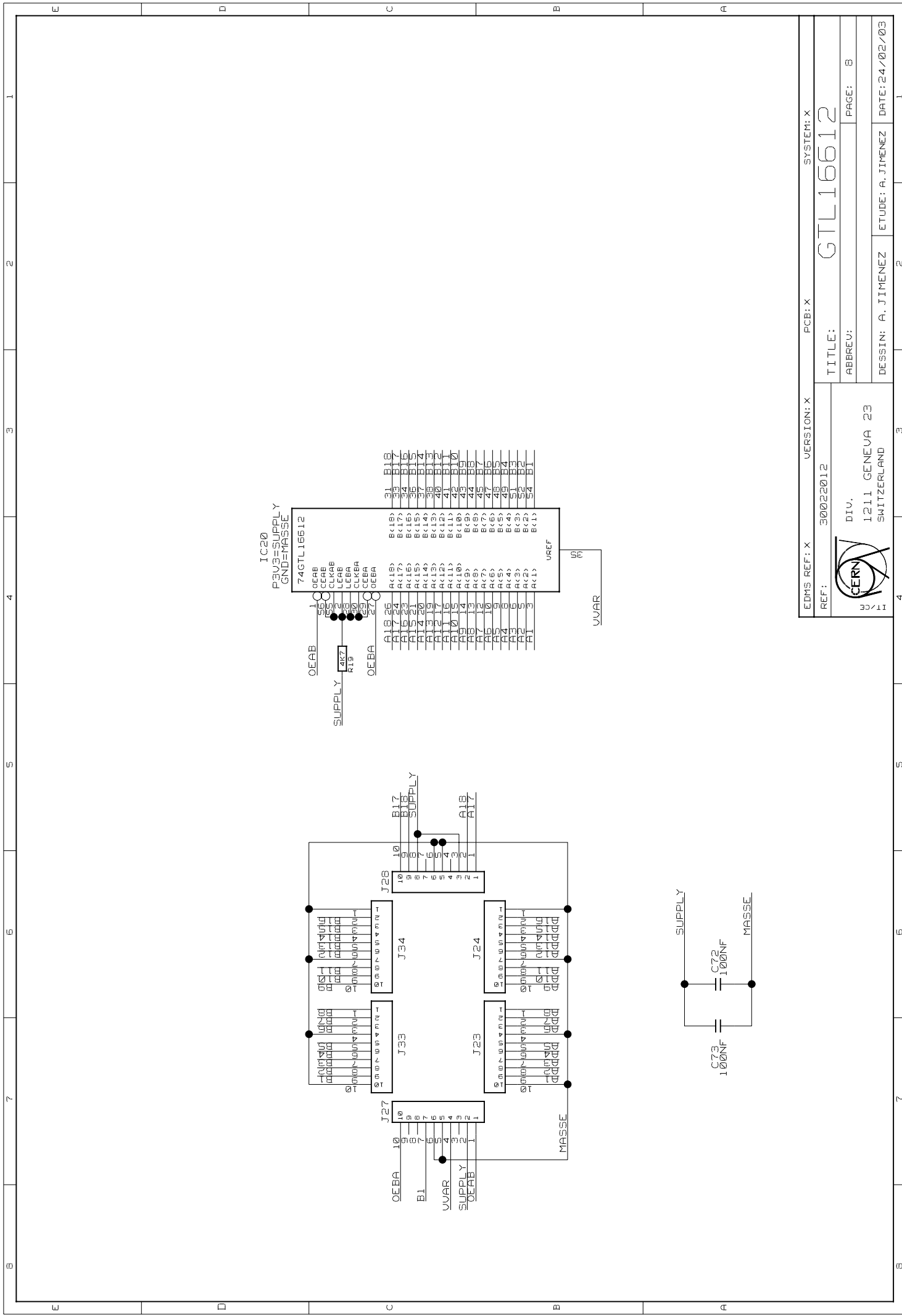




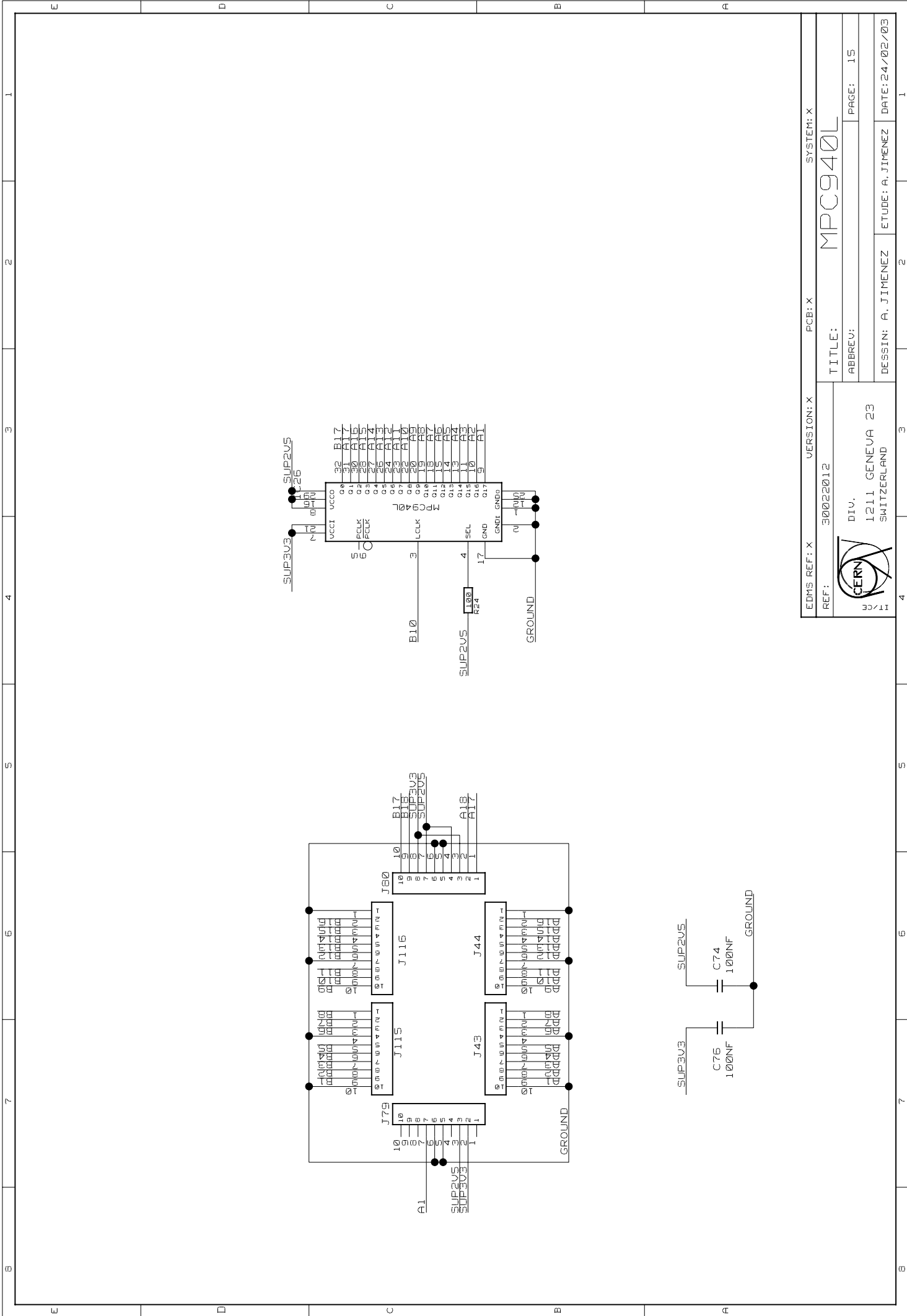
EDMS REF: X	VERSION: X	PCB: X	SYSTEM: X
REF: 30022012	TITLE: MIC39151		PAGE: 2
DIV. 1211 GENEVA 23		DESSIN: A. JIMENEZ	
CERN		ETUDE: A. JIMENEZ	
1211 GENEVA 23		DATE: 24/02/03	
SWITZERLAND			



EDMS REF: X	VERSION: X	PCB: X	SYSTEM: X
REF: 30022012	TITLE: MIC29371		PAGE: 3
DIV. 1211 GENEVA 23		DESIGN: A. JIMENEZ	DATE: 24/02/03
CERN		ETUDE: A. JIMENEZ	1
1211 GENEVA 23		2	1
SWITZERLAND		3	1
4		4	1
5		5	1
6		6	1
7		7	1
8		8	1
9		9	1
10		10	1
11		11	1
12		12	1
13		13	1
14		14	1
15		15	1
16		16	1
17		17	1
18		18	1
19		19	1
20		20	1



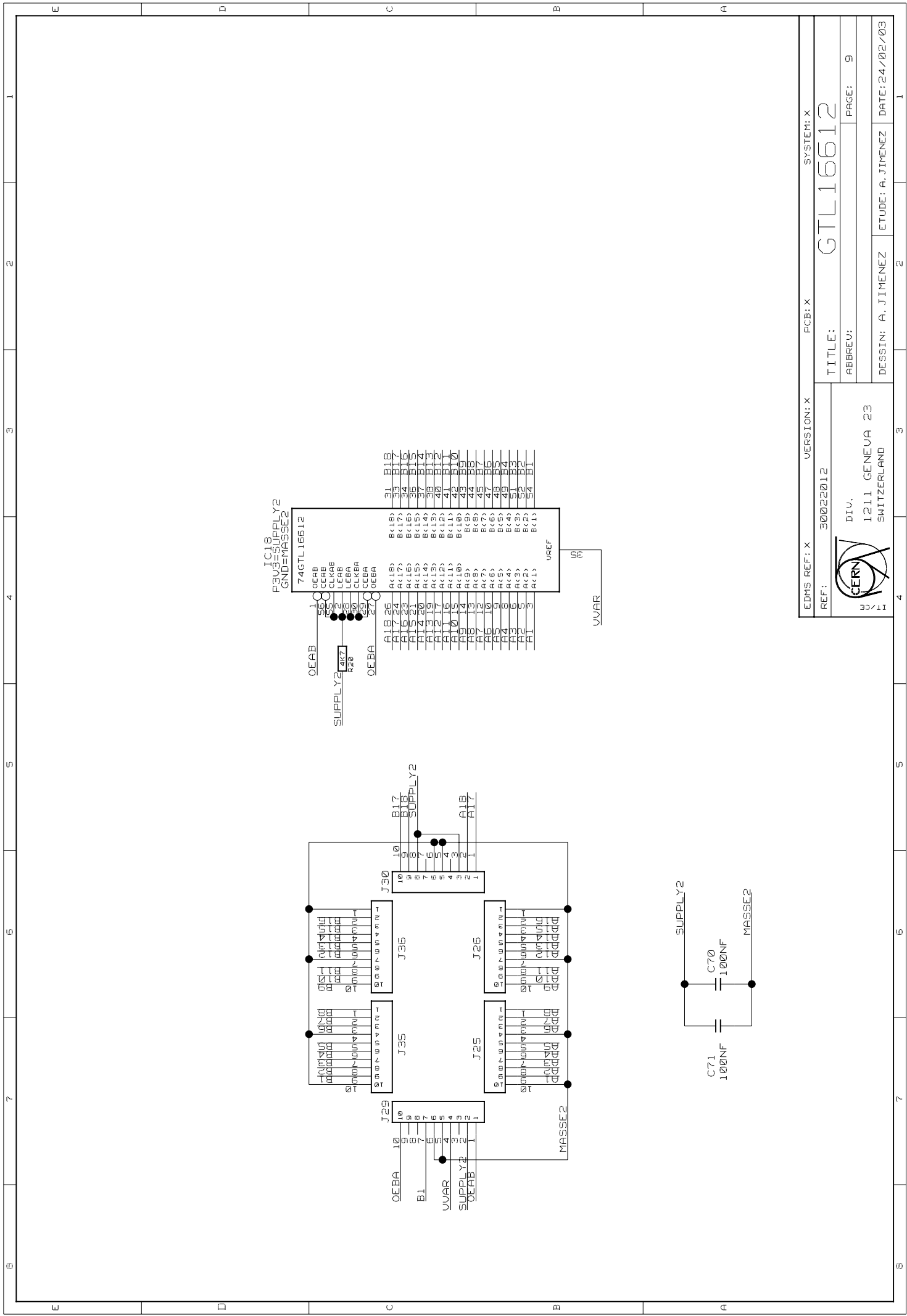
EDMS REF: X	VERSION: X	PCB: X	SYSTEM: X
REF: 30022012	TITLE: GTL16612		
	ABBREV:	PAGE: 8	
IC 17	DIV. 1211 GENEVA 23		
	DESSIN: A. JIMENEZ		ETUDE: A. JIMENEZ
	SWITZERLAND		DATE: 24/02/03




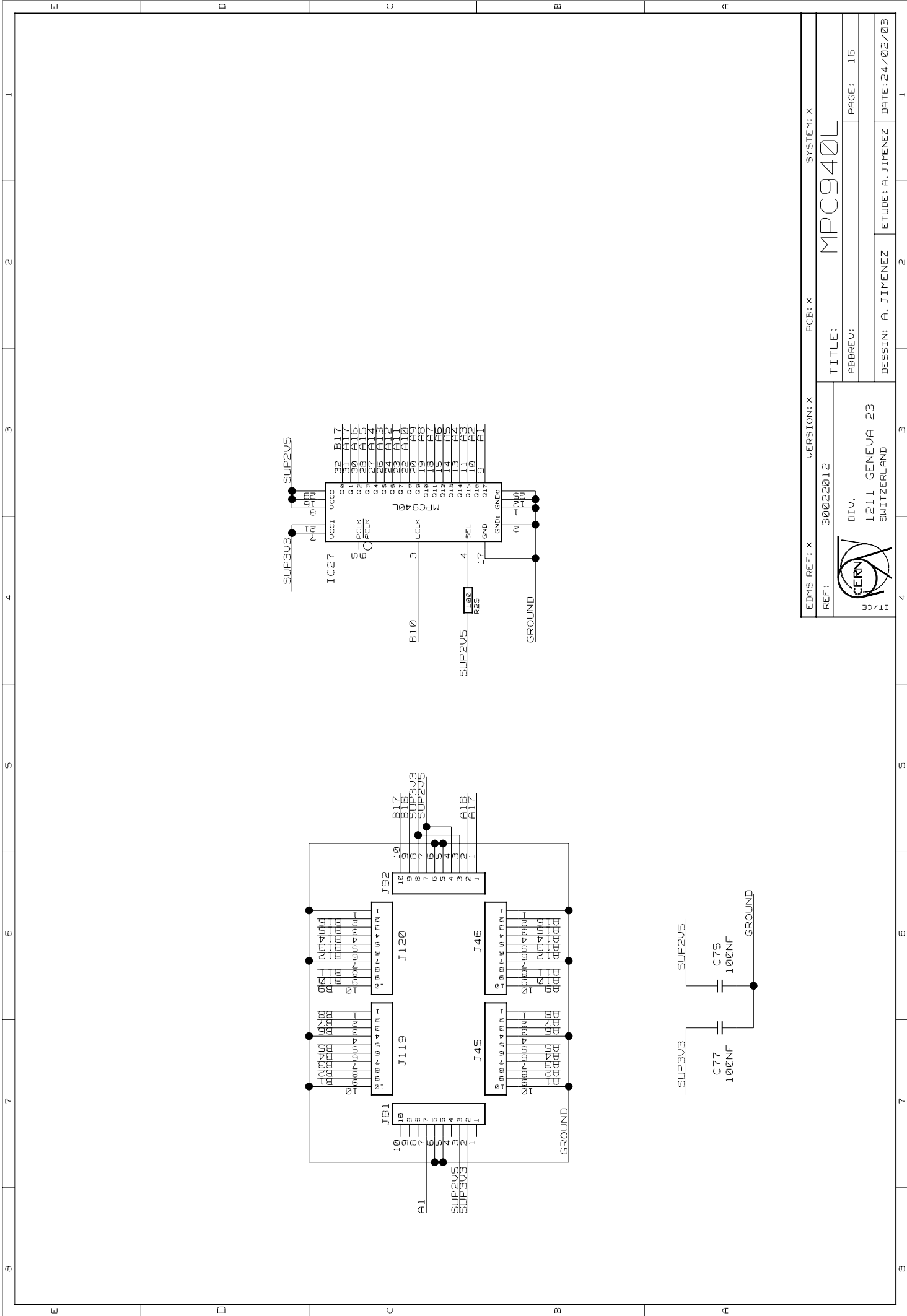
EDMS REF: X	VERSION: X	PCB: X	SYSTEM: X
REF: 30022012	TITLE: MPC940L		PAGE: 15
DIV. 1211 GENEVA 23		ABBREV:	
DESSIN: A. JIMENEZ		ETUDE: A. JIMENEZ	
DATE: 24/02/03			



1211 GENEVA 23
SWITZERLAND



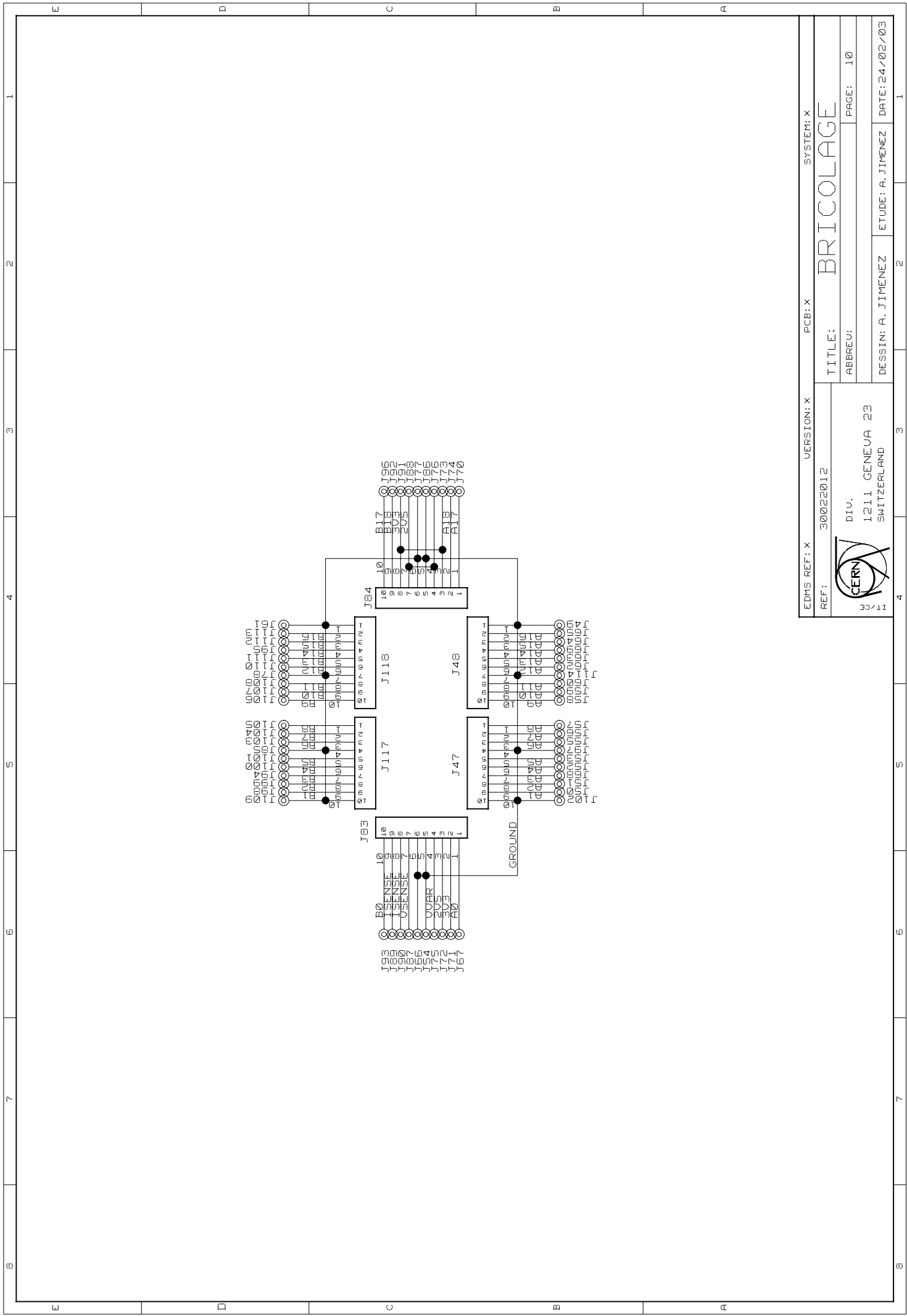
EDMS REF: X	VERSION: X	PCB: X	SYSTEM: X
REF: 30022012	TITLE: GTL16612		
	ABBREV:		PAGE: 9
		DIV. 1211 GENEVA 23 SWITZERLAND	
DESSIN: A. JIMENEZ		ETUDE: A. JIMENEZ	DATE: 24/02/03



EDMS REF: X	VERSION: X	PCB: X	SYSTEM: X
REF: 30022012	TITLE: MPC940L		
	ABBREV: PAGE: 15		
	DESSIN: A. JIMENEZ	ETUDE: A. JIMENEZ	DATE: 24/02/03



1708
 DIV.
 1211 GENEVA 23
 SWITZERLAND



EDMS REF: X	VERSION: X	PCB: X	SYSTEM: X
REF: 30022012	TITLE: BRICOLAGE		PAGE: 10
DIV. 1211 GENEVA 23		DESSIN: A. JIMENEZ	
SWITZERLAND		ETUDE: A. JIMENEZ	
DATE: 24/02/03			