

# First results on electronics tests

Rok Pestotnik, CERN PH-AIT,  
S. Kniege

# Preparation of the tools for displaying the calibration data

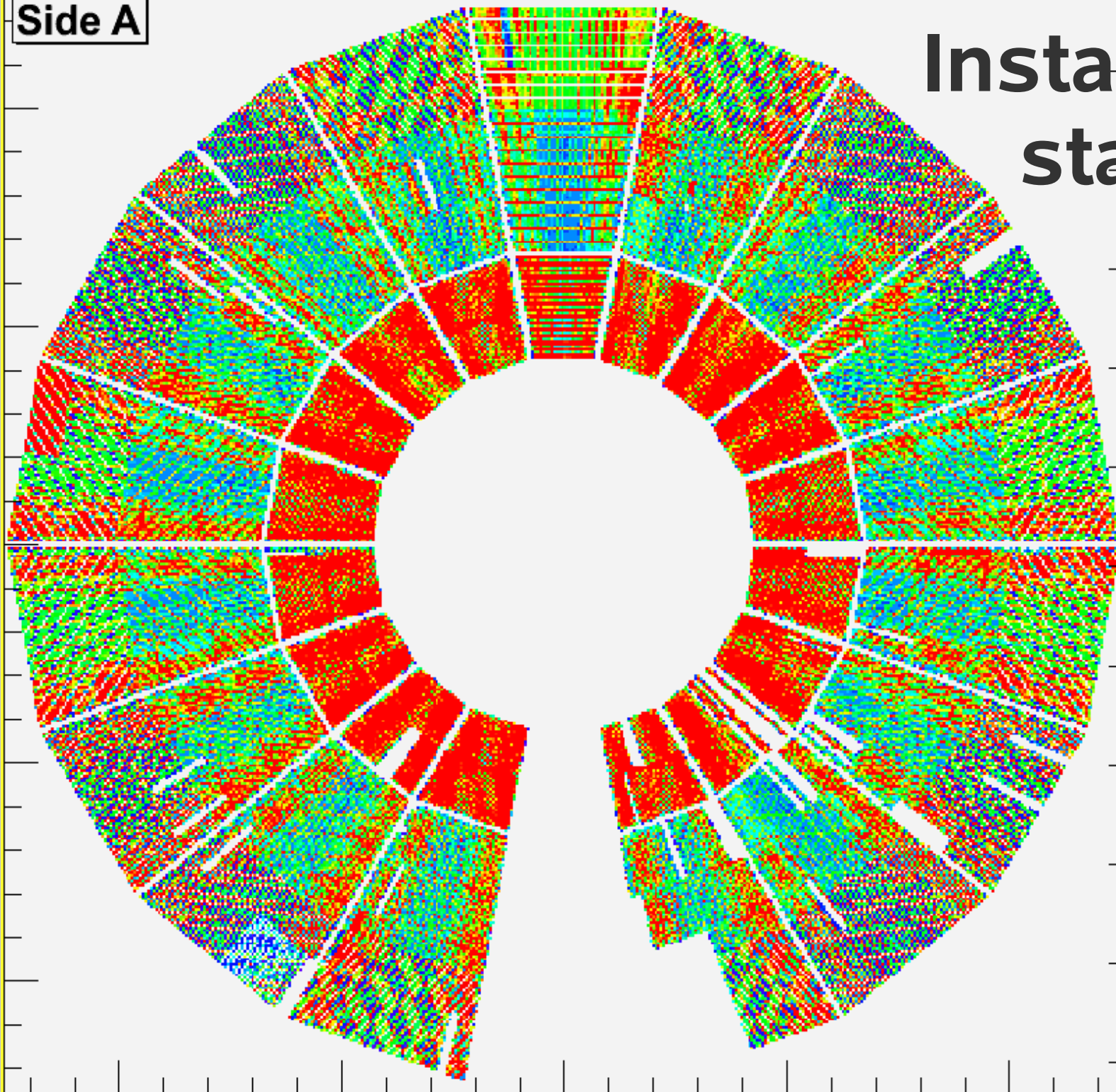
- The goal:
  - check the connections of the FEC
  - check the consistency of the mapping
    - electronic channel – pad position
  - check the uniformity of the ROC
  - sector maps of relevant calibration quantities
- During the installation the response of the FEC to the pulser is measured:
  - normally cathode plane is pulsed using a pulse gen.
  - on several places half of the gating grid was pulsed instead

# We have tools

- to detect the mapping inconsistencies
- to display the sector map of the data
- to display particular sectors
- to display particular channels
- We are also able to display the cosmics and laser tracks signals

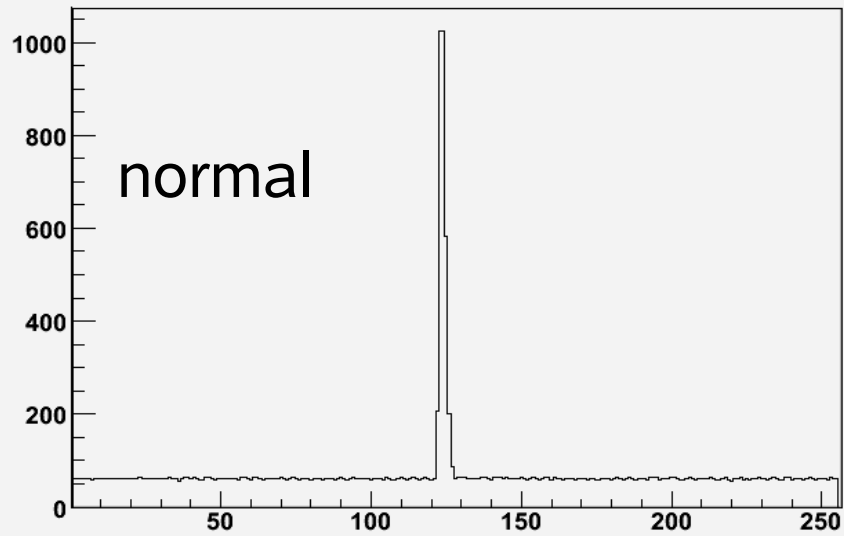
Side A

Installation  
status

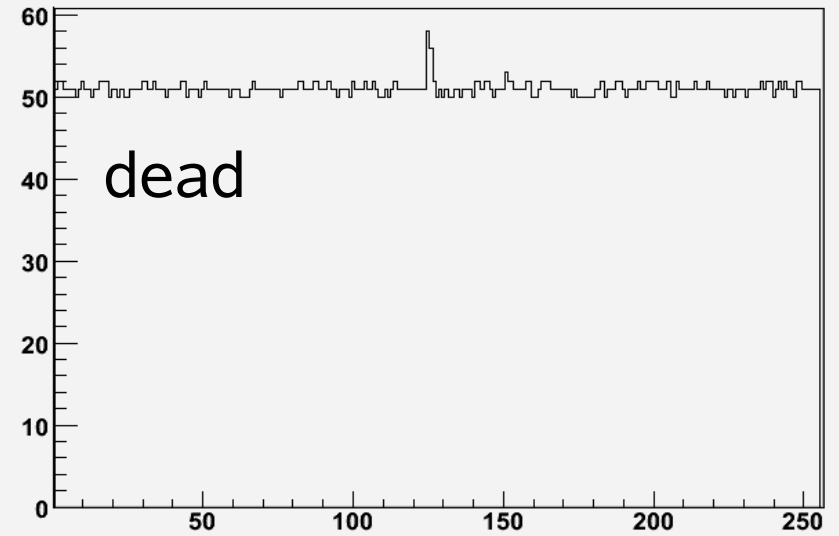


# Signals

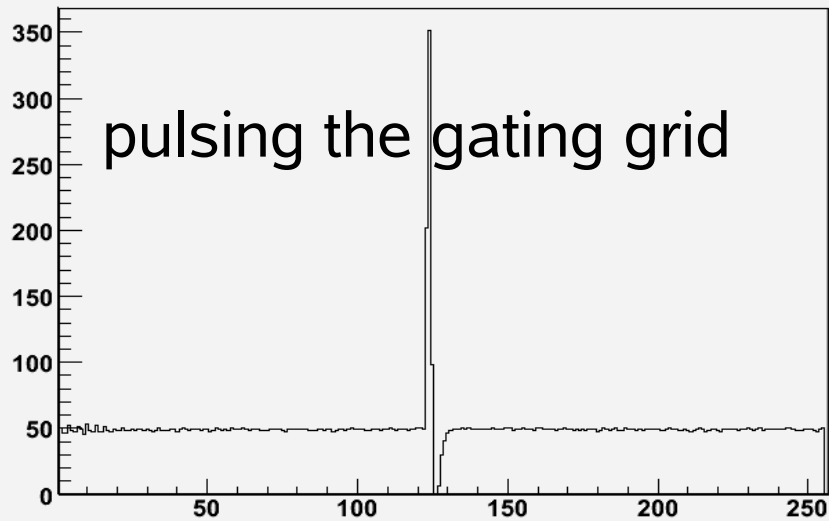
FEC=3205 CH=72 RMS=1.53 Mean=61.05 Max=961.95 tmax=123



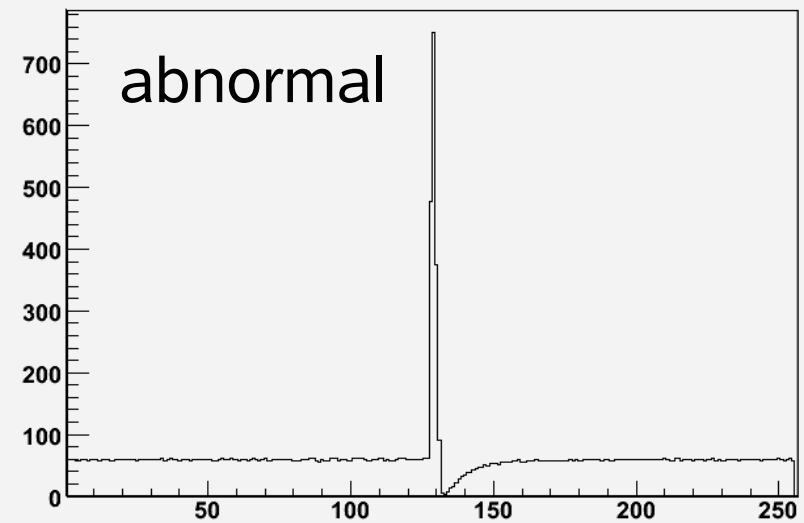
FEC=2027 CH=42 RMS=0.59 Mean=51.03 Max=6.97 tmax=125



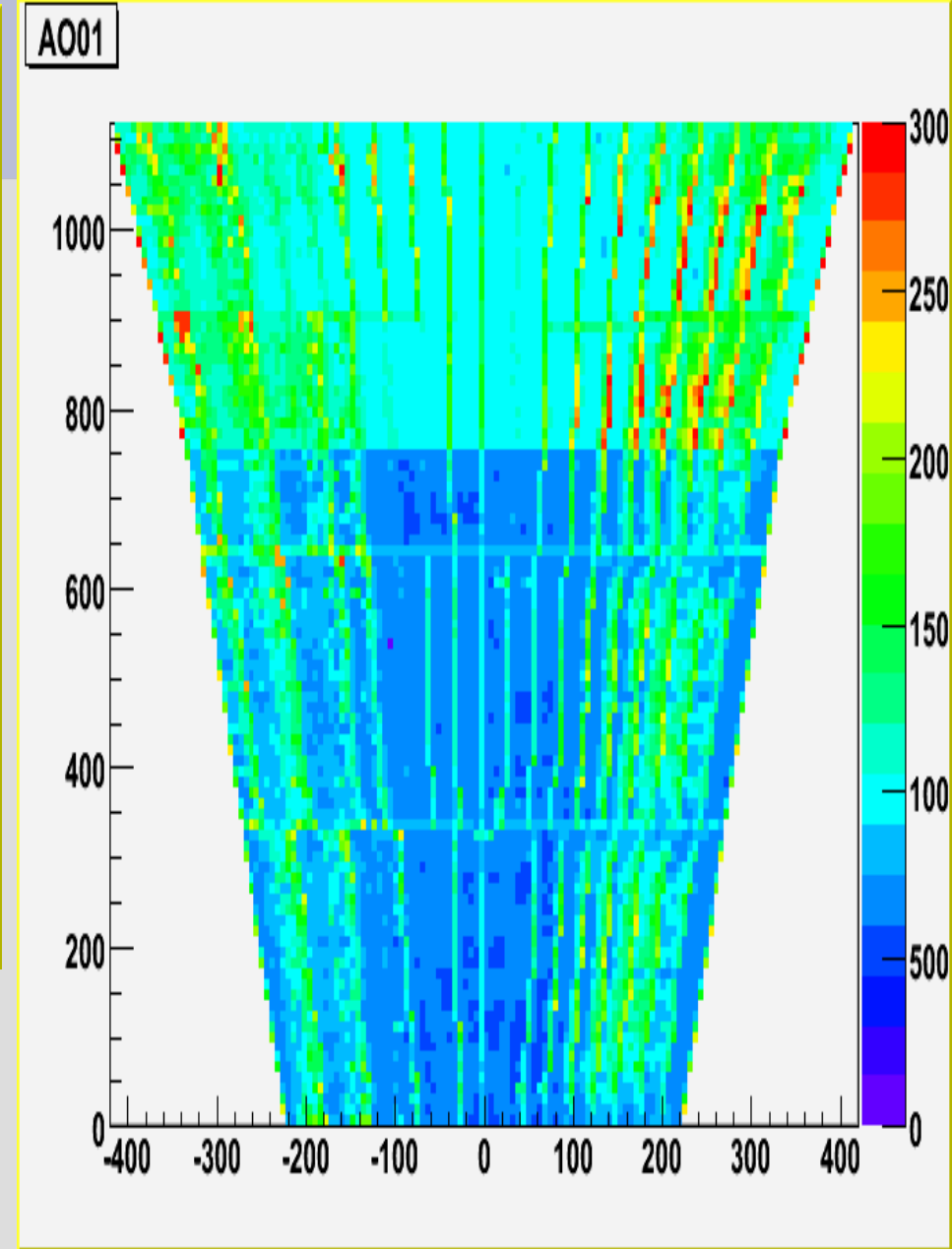
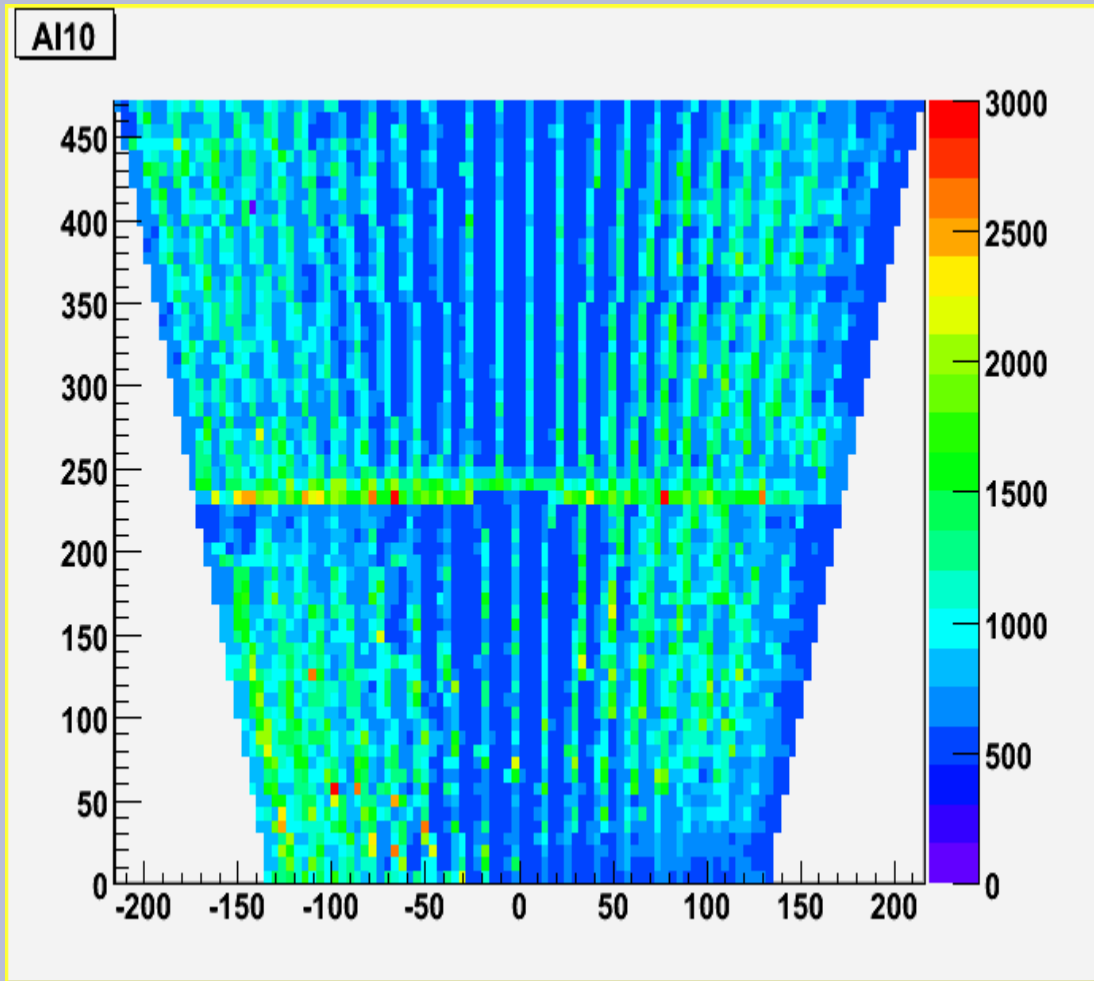
FEC=1977 CH=61 RMS=1.18 Bline=48.62 Max=302.38 tmax=124 S=AO10 R=84 P=80



FEC=3329 CH=98 RMS=1.09 Bline=59.25 Max=690.75 tmax=129 S=AO07 R=91 P=62



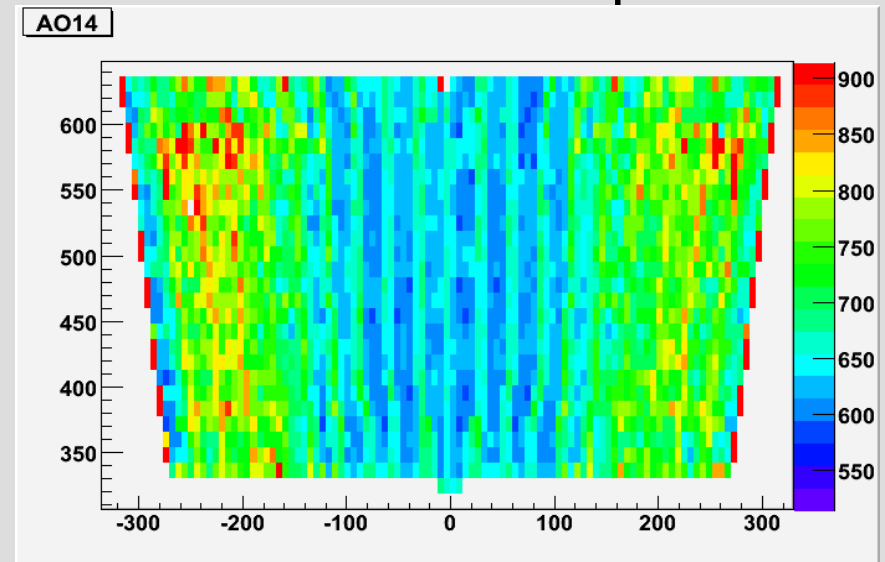
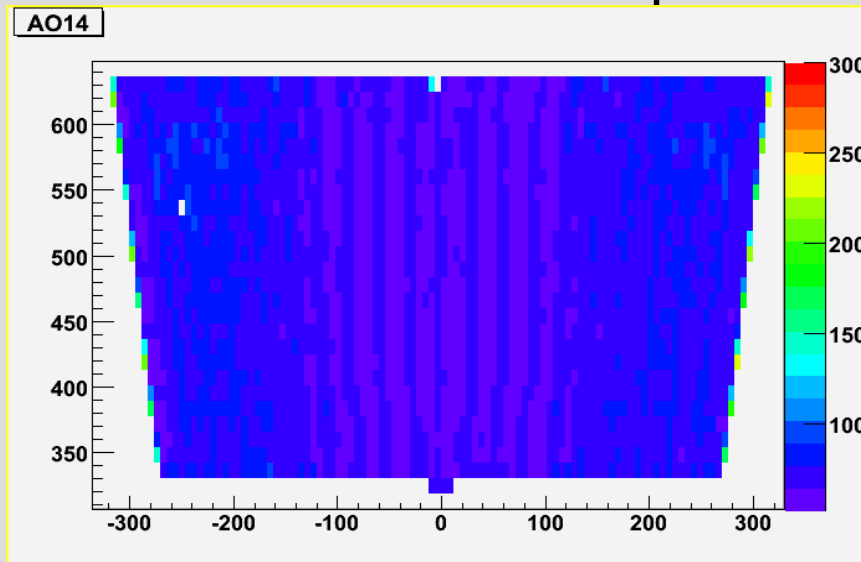
# ROC map: pulse peak area



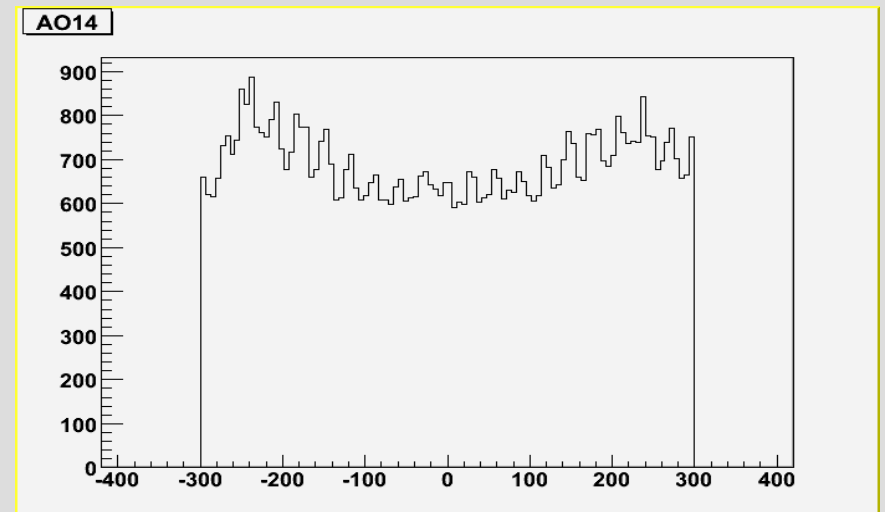
- Repetitive structure:
  - The signals are higher on the channels with the neighbours unconnected

# Single partition

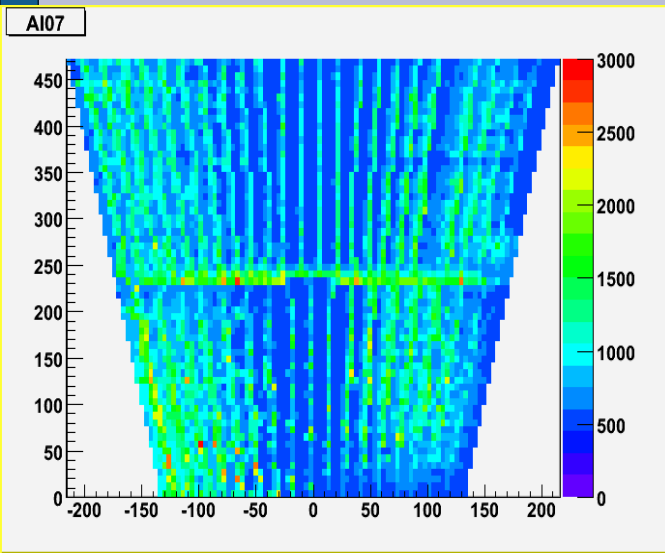
- The single partition remeasured:
    - connect the FEC to the ground bars
    - all ROC equipped with the readout FECs
      - same color depth
- increase color depth



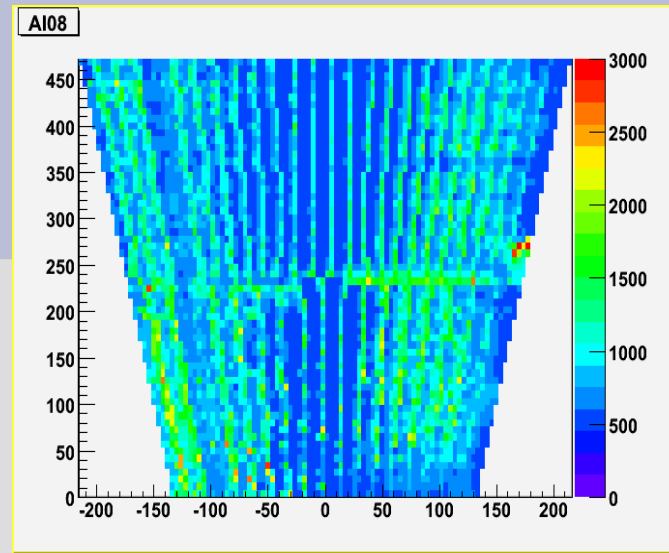
- The gain at the edges is higher for about 25%
- We expect the uniform response when all FEC are powered



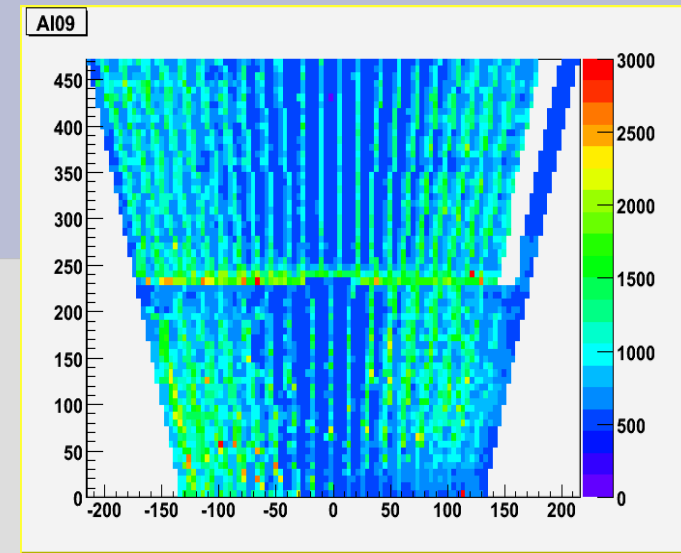
# Inner ROC



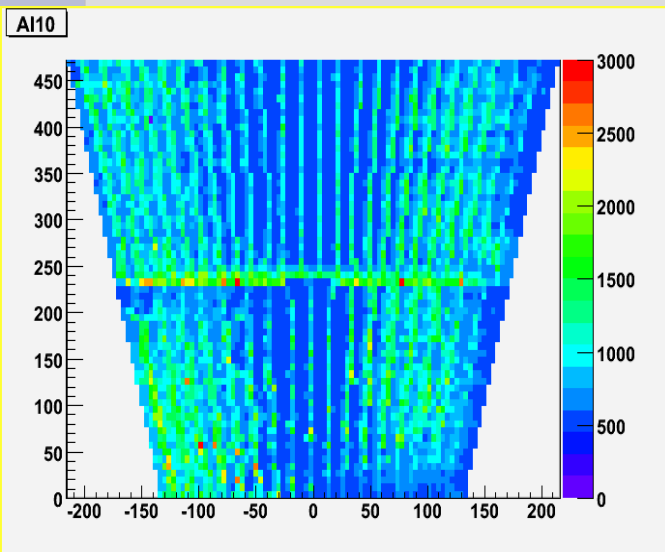
AI07



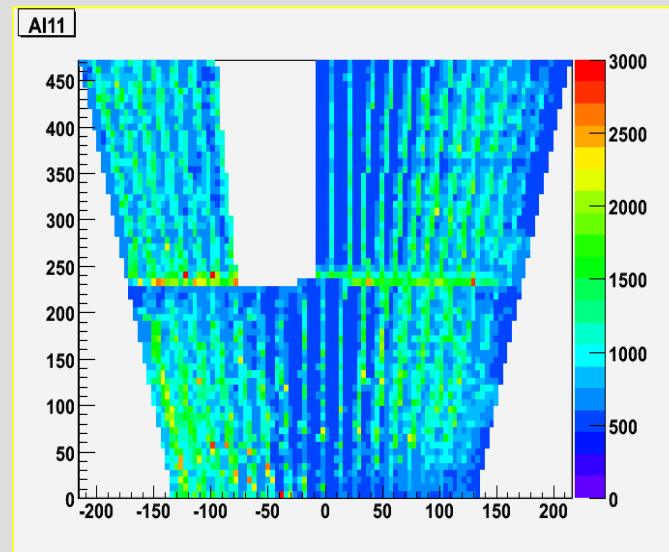
AI08



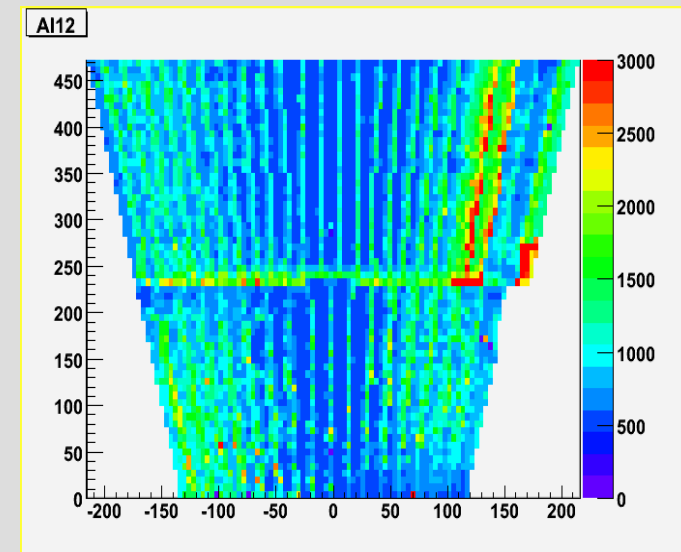
AI09



AI10



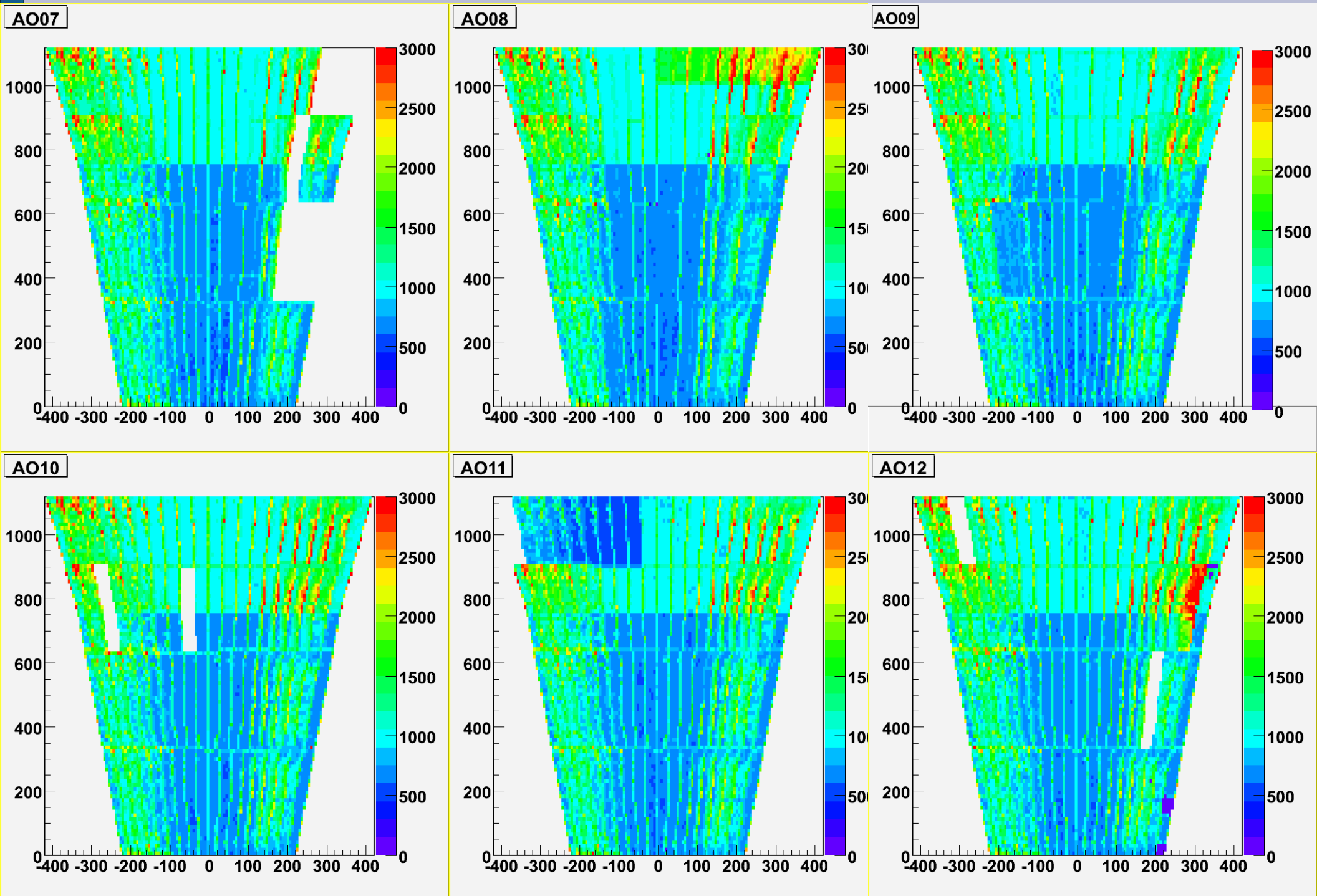
AI11



AI12



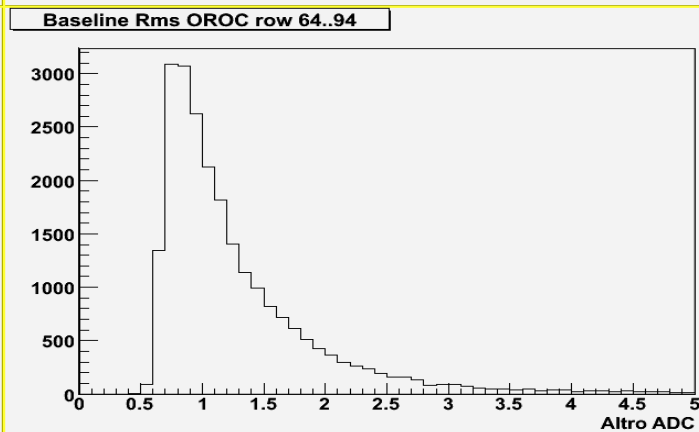
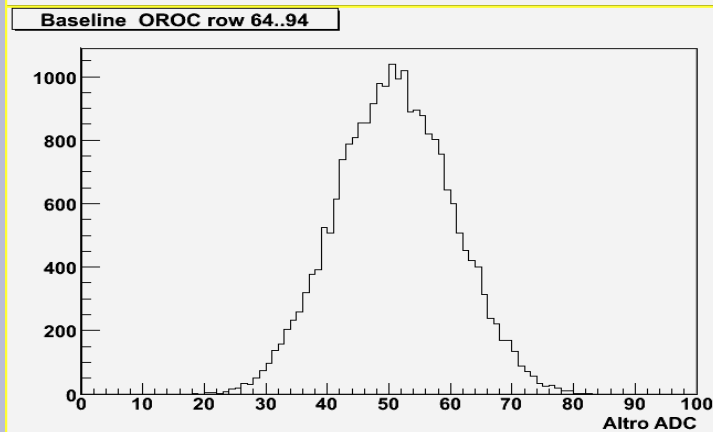
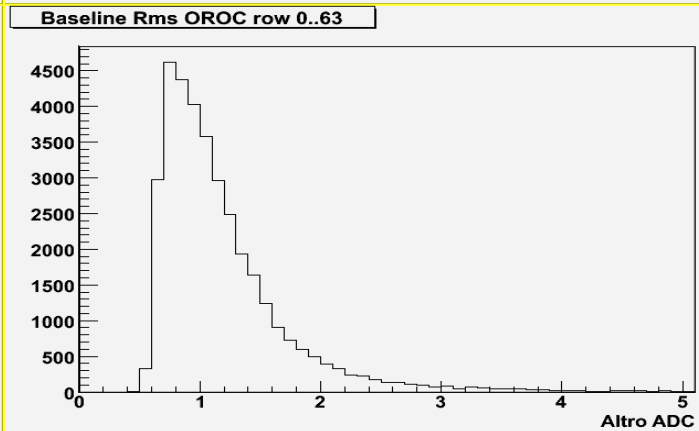
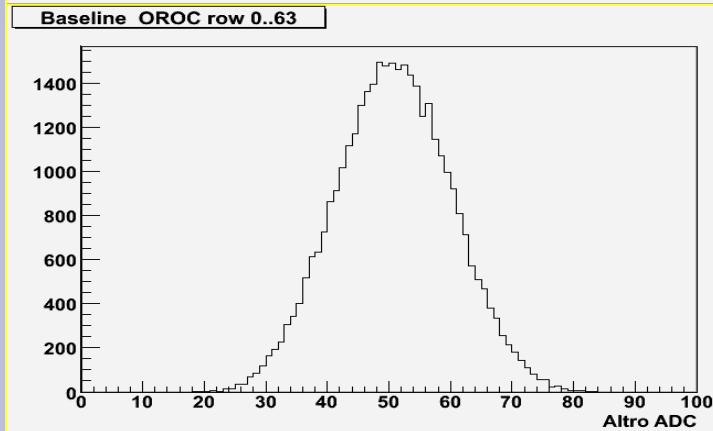
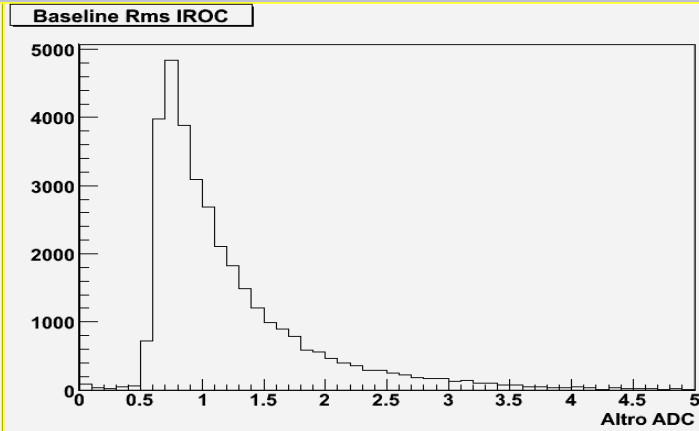
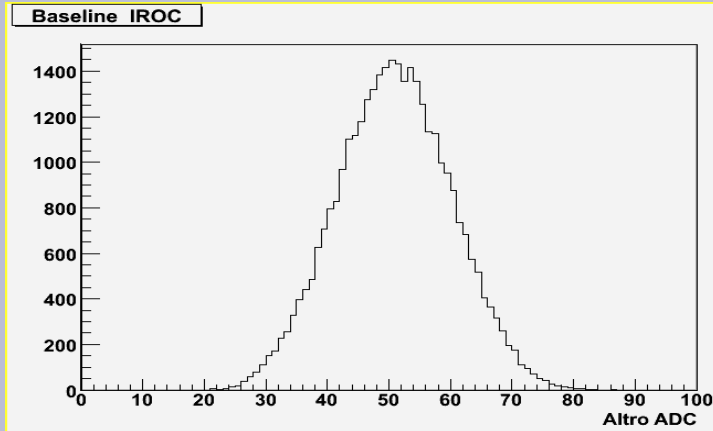
# Outer ROC



# Comulative statistics

- Baseline

RMS



# Comulative statistics

- Max Signal

induced Q

