

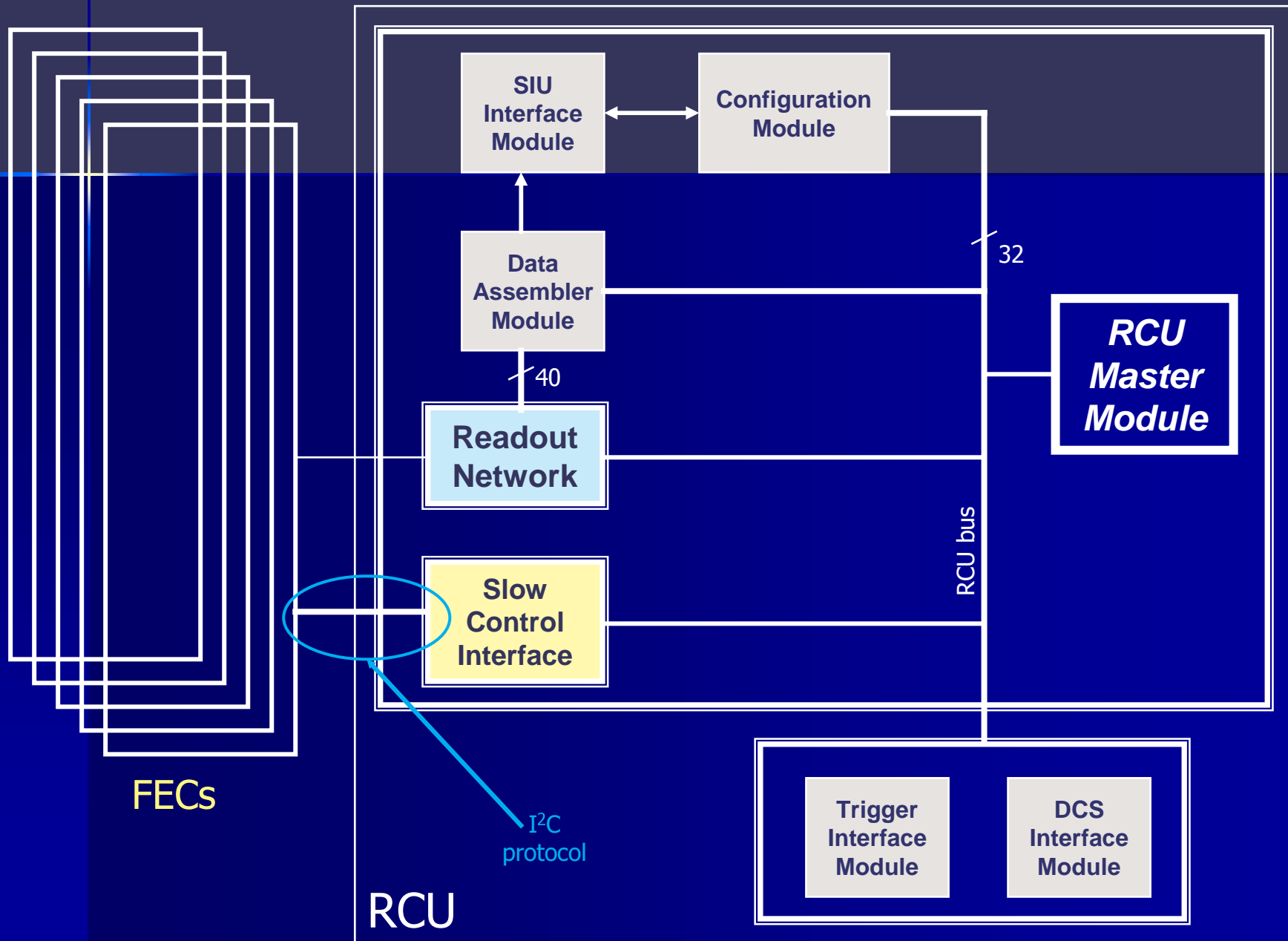
RCU - Final Prototyping

The local Slow Control

- Dedicated bus connection
RCU \longleftrightarrow FEC Board Controller
- Sharing the Altro readout backplane
- Monitoring status of all FECs
- Interrupt and Error handling

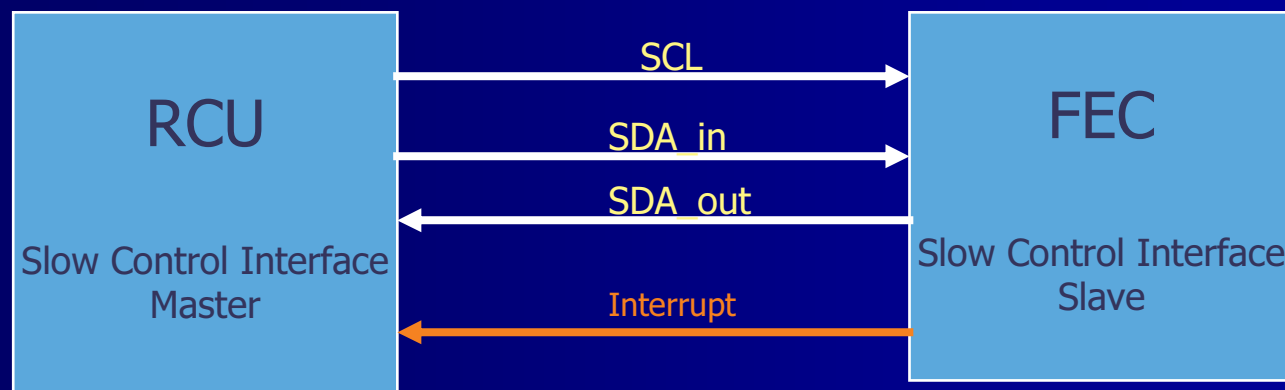
Carmen González Gutiérrez

RCU: functional overview



I²C derived protocol

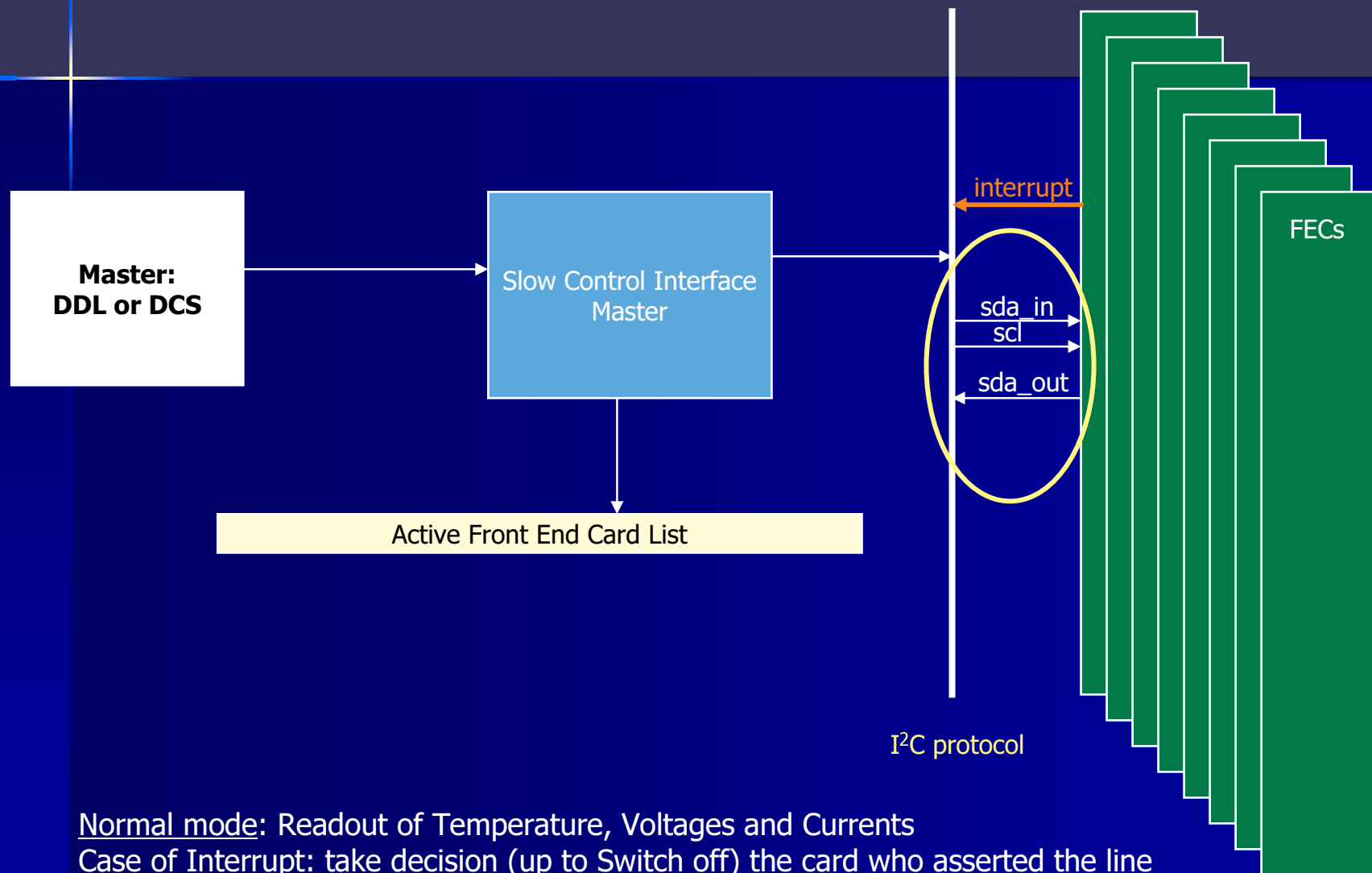
- Serial Communication with 3 lines:
 - 2 unidirectional serial data lines, SDA
 - serial clock, SCL
- Interrupt line
- Frequency of SCL: 5 MHz



Local Slow Control operations

- Configure the power state of all FECs
- Monitor voltages, currents and temperature
- Interrupt handling in case of :
 - Temperature or currents over thresholds
 - Voltages under threshold
 - Power supply errors
 - Missed sclk
 - Protocol error
- Read status parameters:
 - L1, L2 counters
 - sclk counter
 - dstb counter

Readout with Slow Control



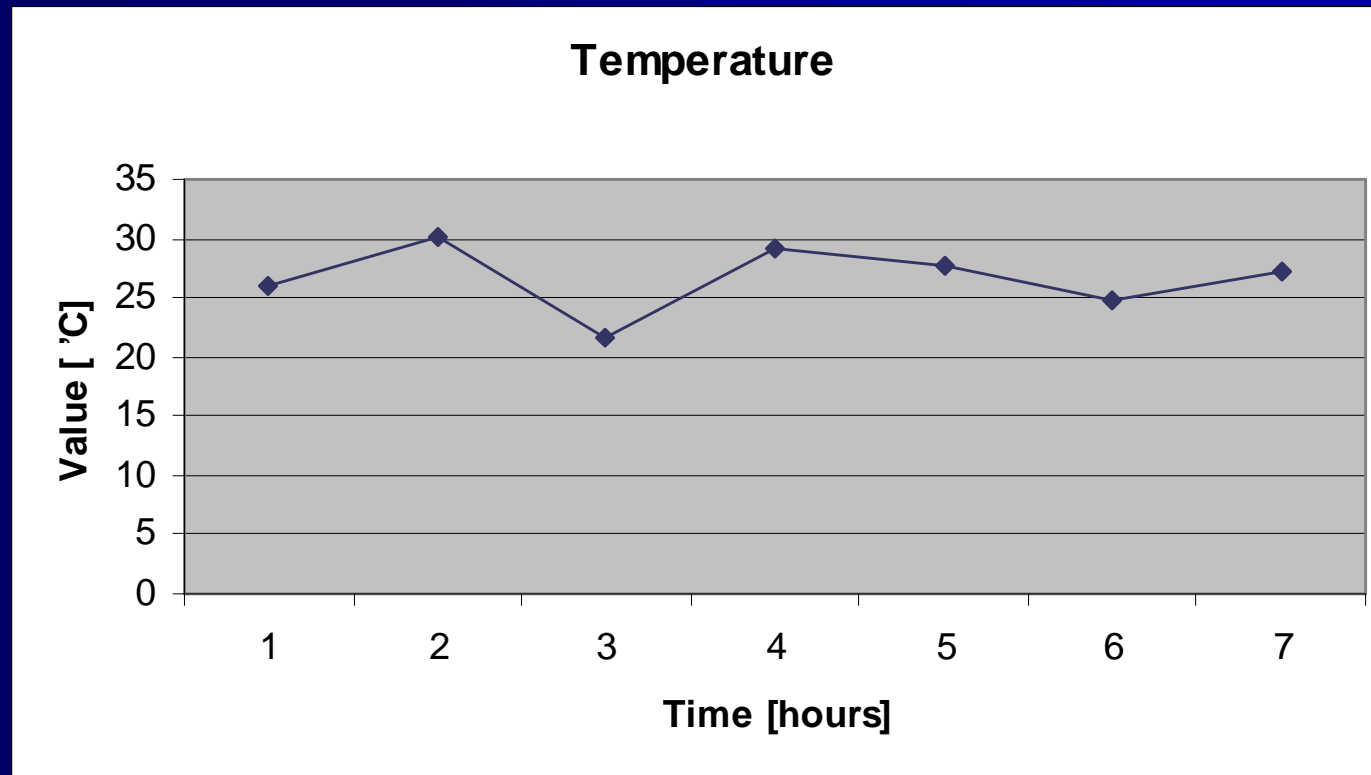
Example of readout values for 1 crate

	Card	T [°C]	AV [V]	AC [mA]	DV [V]	DC [A]
BRANCH A	0	27.00	3.970	641	3.234	1.114
	1	26.50	3.964	575	3.228	1.075
	2	26.25	3.987	619	3.257	1.075
	3	26.50	3.964	619	3.234	1.154
	4	25.50	3.964	575	3.228	1.154
	5	25.50	3.976	575	3.257	1.075
	6	23.75	3.981	575	3.257	1.075
BRANCH B	0	26.75	3.970	553	3.252	1.114
	1	27.75	3.964	597	3.228	1.075
	2	27.00	3.964	575	3.252	1.075
	3	25.50	3.976	597	3.247	1.154
	4	26.25	3.964	553	3.234	1.114
	5	26.25	3.976	575	3.252	1.075
	6	25.50	3.958	531	3.252	1.075
	7	26.25	3.976	597	3.252	1.154
	8	25.75	3.976	575	3.234	1.114

Average values in 7 hours

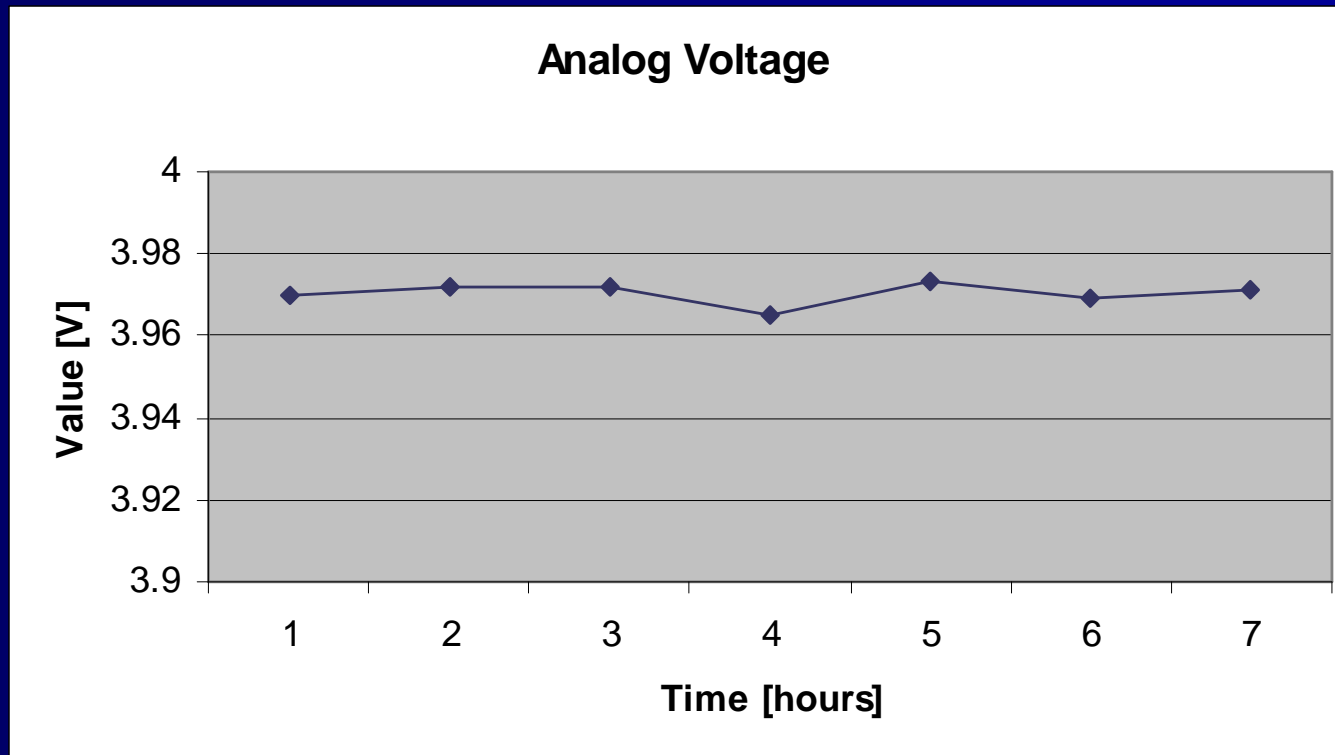
time	T [°C]	AV [V]	AC [mA]	DV [V]	DC [A]
1	26.12	3.970	583.25	3.244	1.105
2	30.10	3.972	588.75	3.242	1.097
3	21.57	3.972	583.25	3.247	1.098
4	29.28	3.957	589.34	3.246	1.087
5	27.65	3.973	589.34	3.246	1.101
6	24.80	3.969	579.02	3.242	1.093
7	27.27	3.971	581.97	3.241	1.095

Temperature



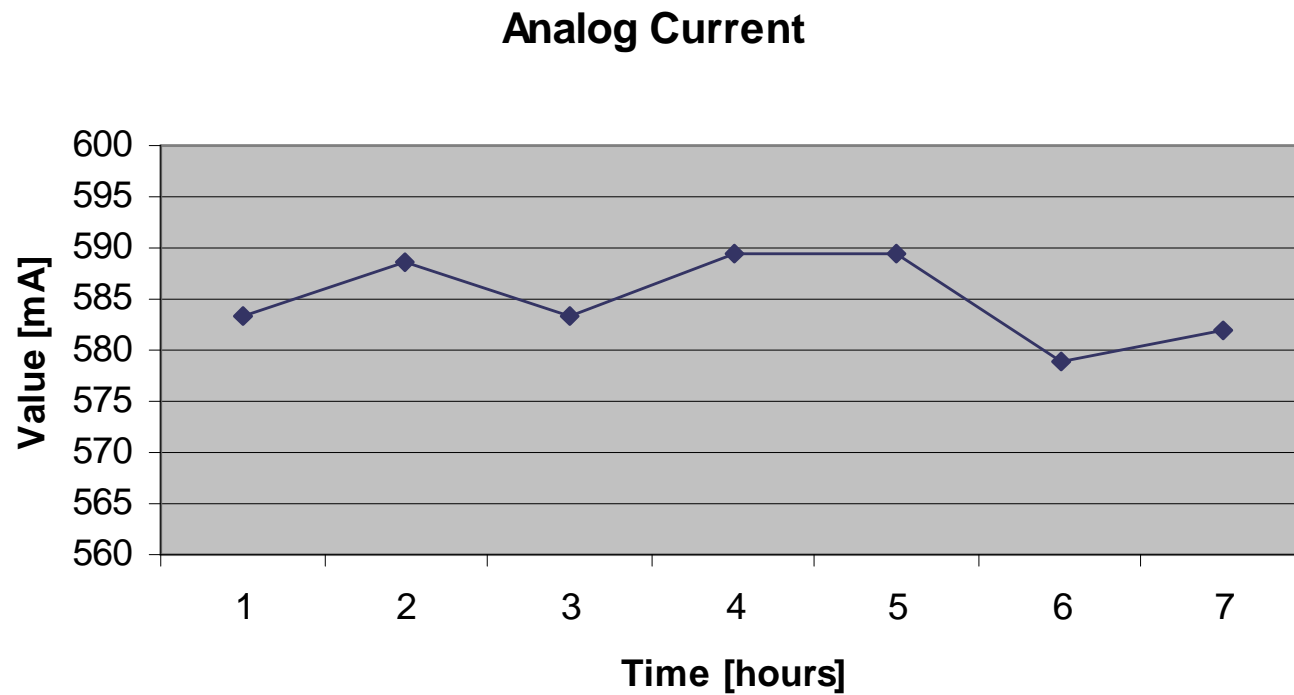
Maximum Temperature Threshold = 40 ° C

Analog Voltage



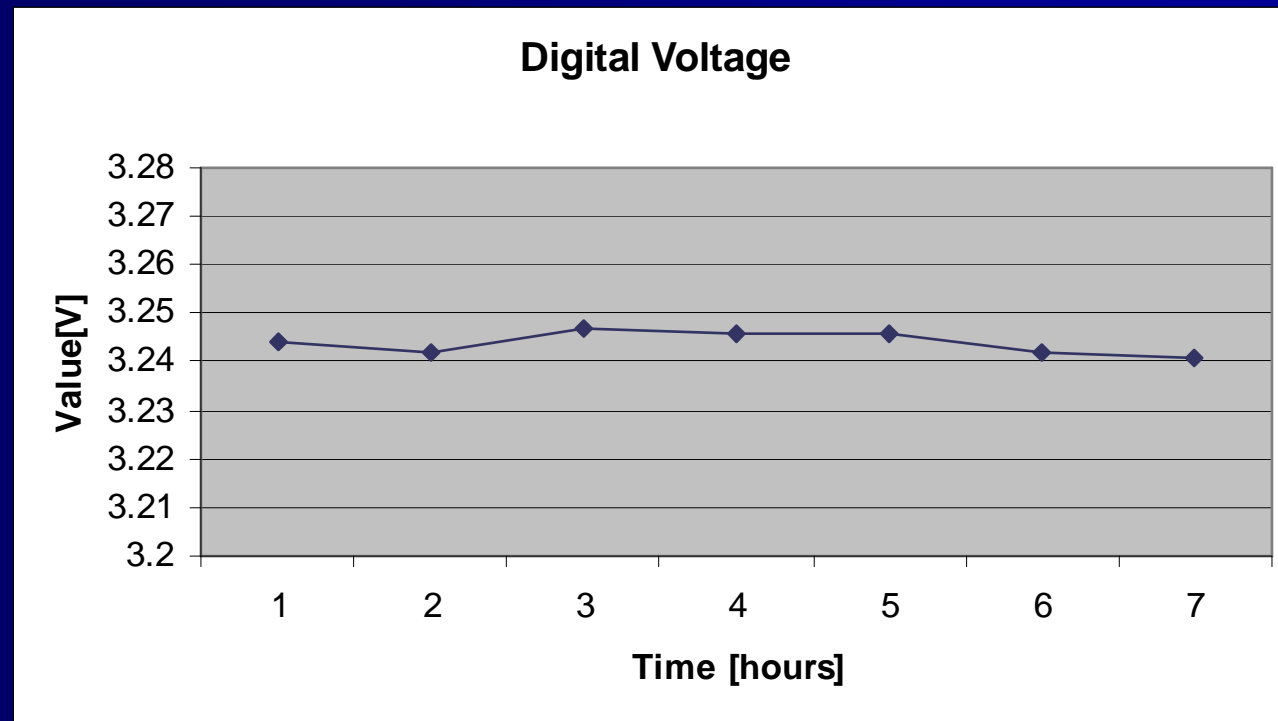
Minimum Analog Voltage Threshold = 3.63 V

Analog Current



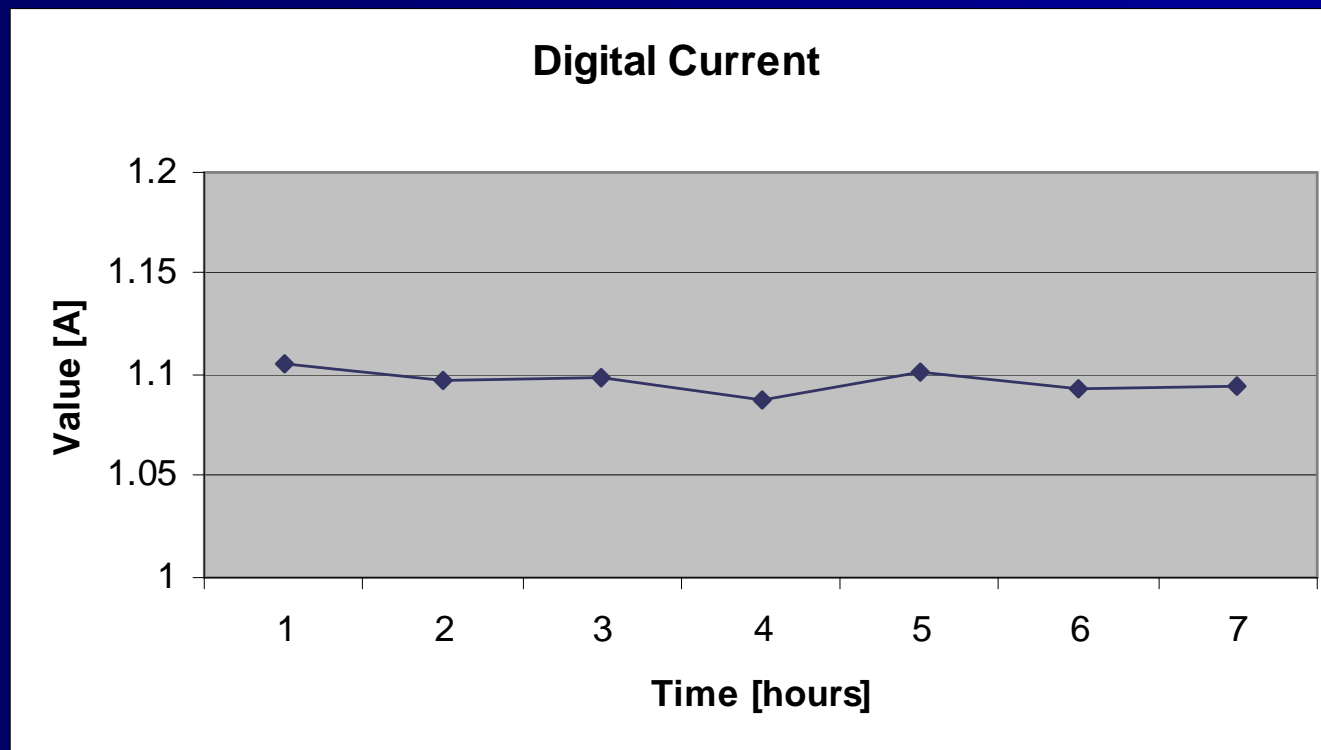
Maximum Analog Current Threshold = 750 mA

Digital Voltage



Minimum Digital Voltage Threshold = 2.82 V

Digital Current



Maximum Digital Current Threshold = 1.91 A

Summary

- The local Slow Control is able to:
 - Monitor Temperatures, Voltages and Currents from the FEC's
 - Read status parameters and counters
 - Configure the power state of the FEC's
 - Switch off the card in case of Interrupt