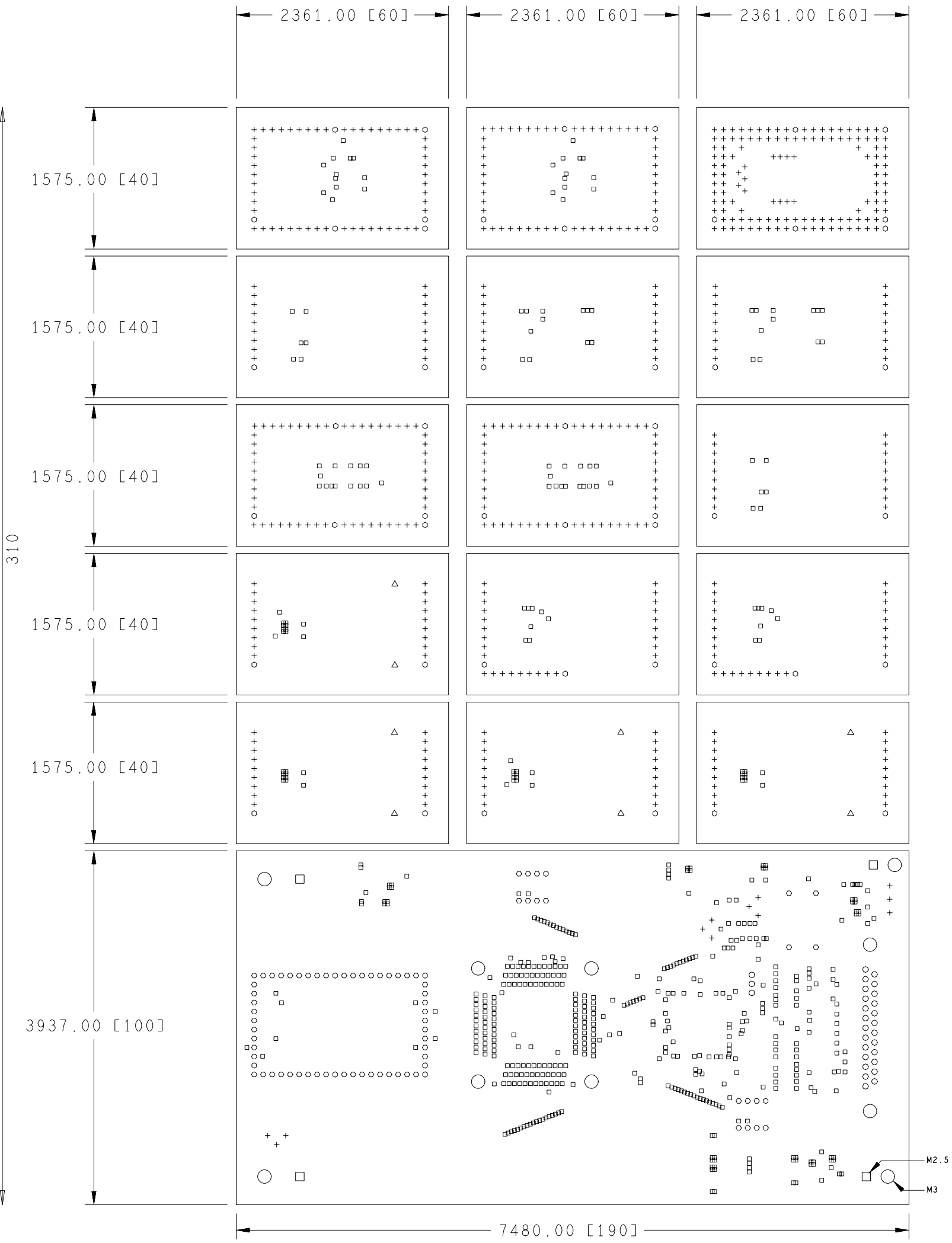
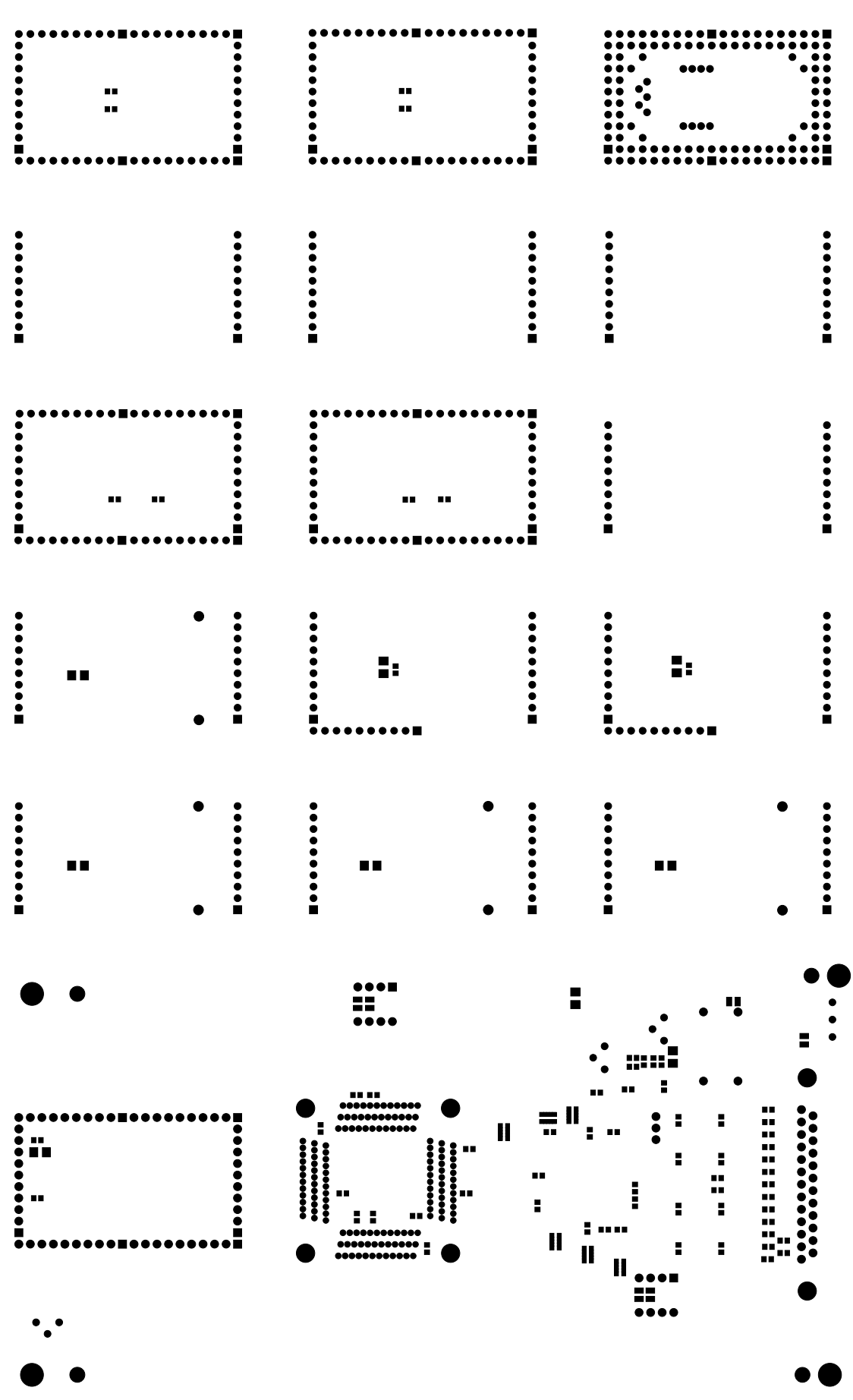


DATE	S1V05003	DESIGN	A. JUNIQUE	FACE SOUDURES
MATIERE DU CI	EPOXY	EP. DU CI	16110E	
EP. DU CUIVRE	32u	NRRE DE COUCHE	4	



DRILL CHART			
ALL UNITS ARE IN MILS			
FIGURE	SIZE	PLATED	QTY
□	16.0	PLATED	475
□	24.0	PLATED	144
+	32.0	PLATED	553
○	40.0	PLATED	28
○	42.0	PLATED	60
○	42.0	PLATED	72
△	53.0	PLATED	8
□	98.0	PLATED	4
○	126.0	PLATED	10

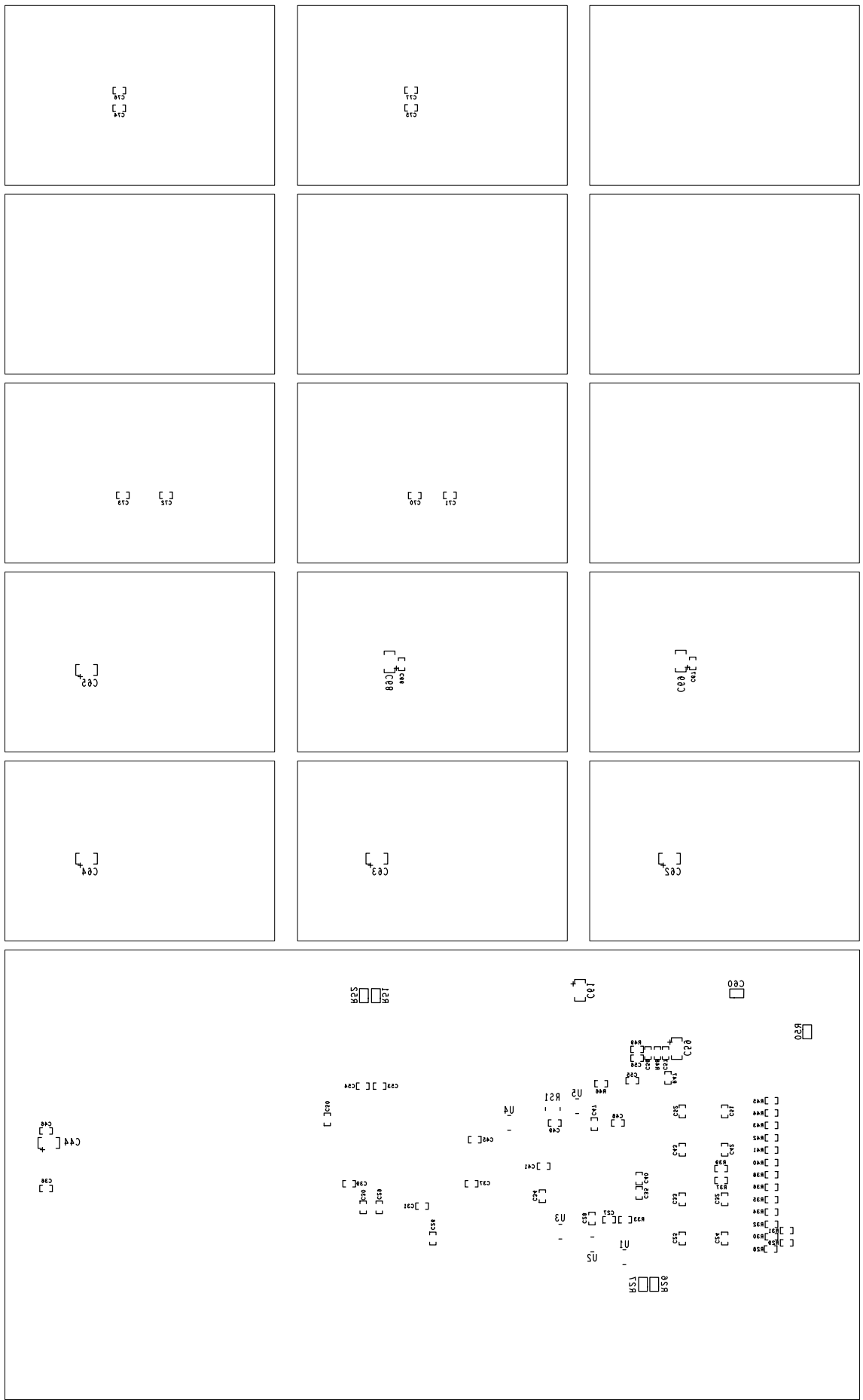
 EP/ED	RADTEST	INDEX 1	NBRE DE COUCHE : 4
	DESS A. JUNIQUE		EP. DU CUIVRE : 35u
	DATE 21/02/2003		EP. DU CI : 16/10e
			MATIERE DU CI : EPOXY



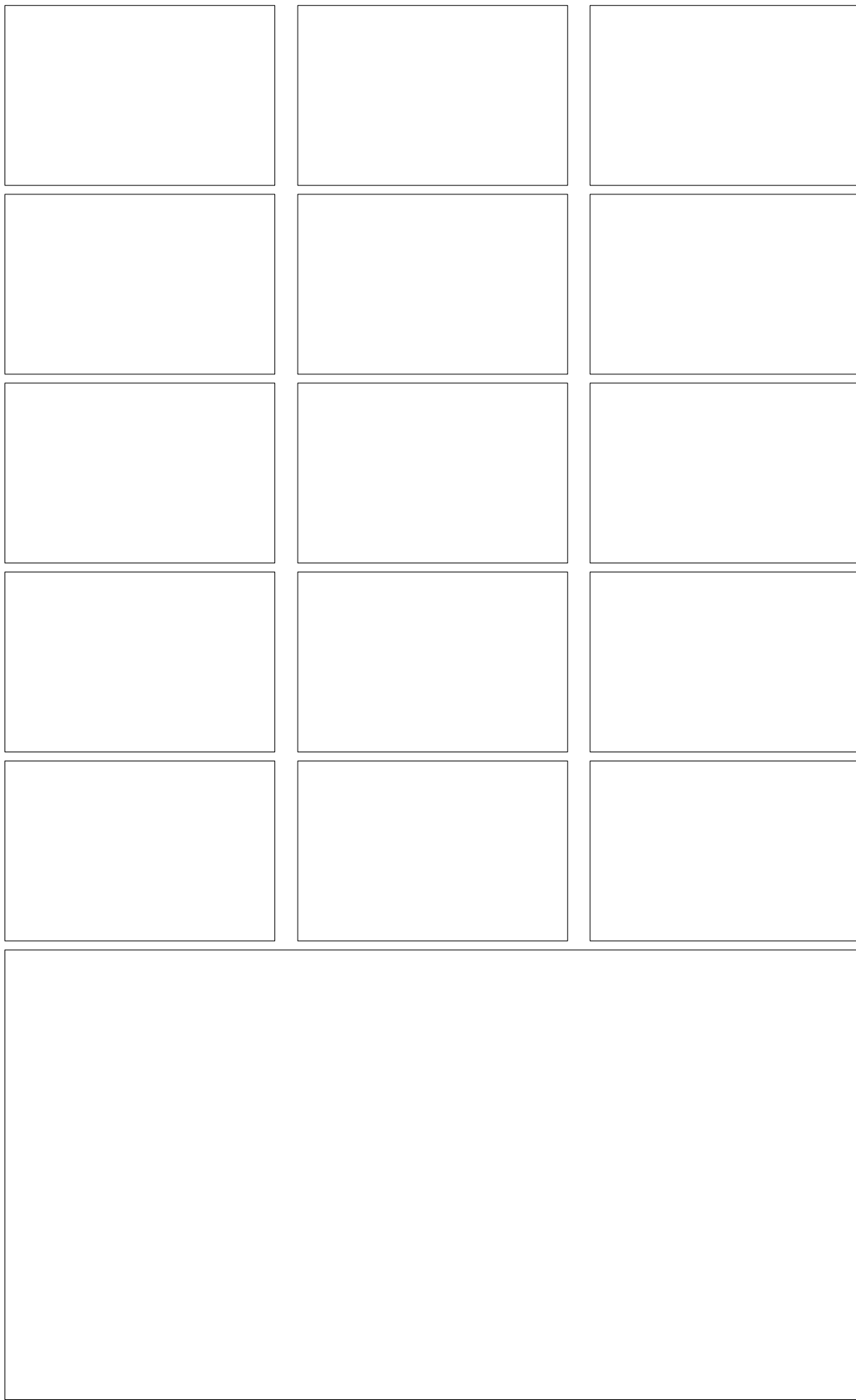
EPC		DATE		SIVOS003		MATERIE DU CI : EPOXY	
DES2		A. JUNIQUE		EP. DU CI : 1610e		EP. DU CUIVRE : 32u	
RADTST		I		NBR DE COUCHE : 4			

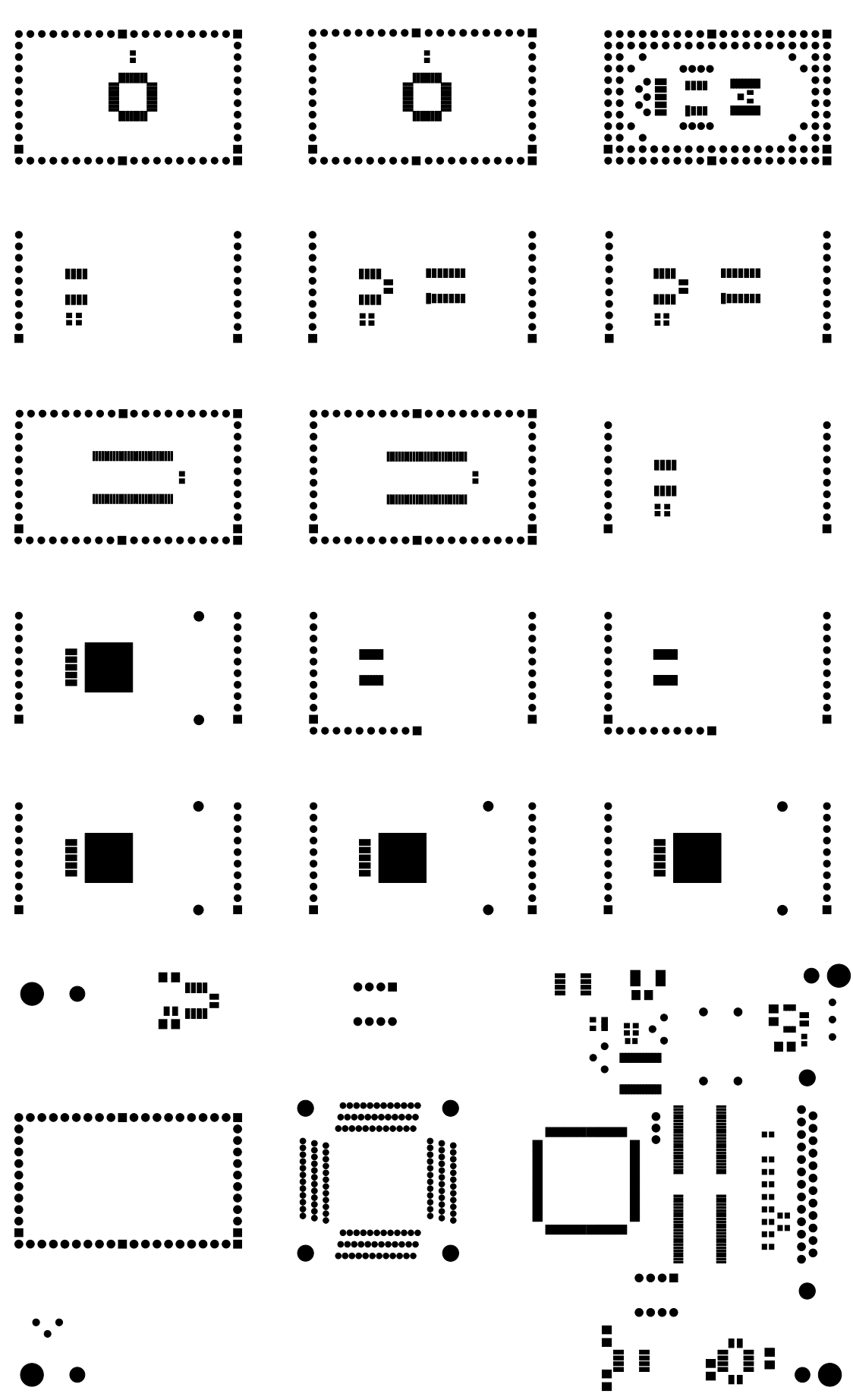



LAOUE ARRET DE SOUDURE W-210E

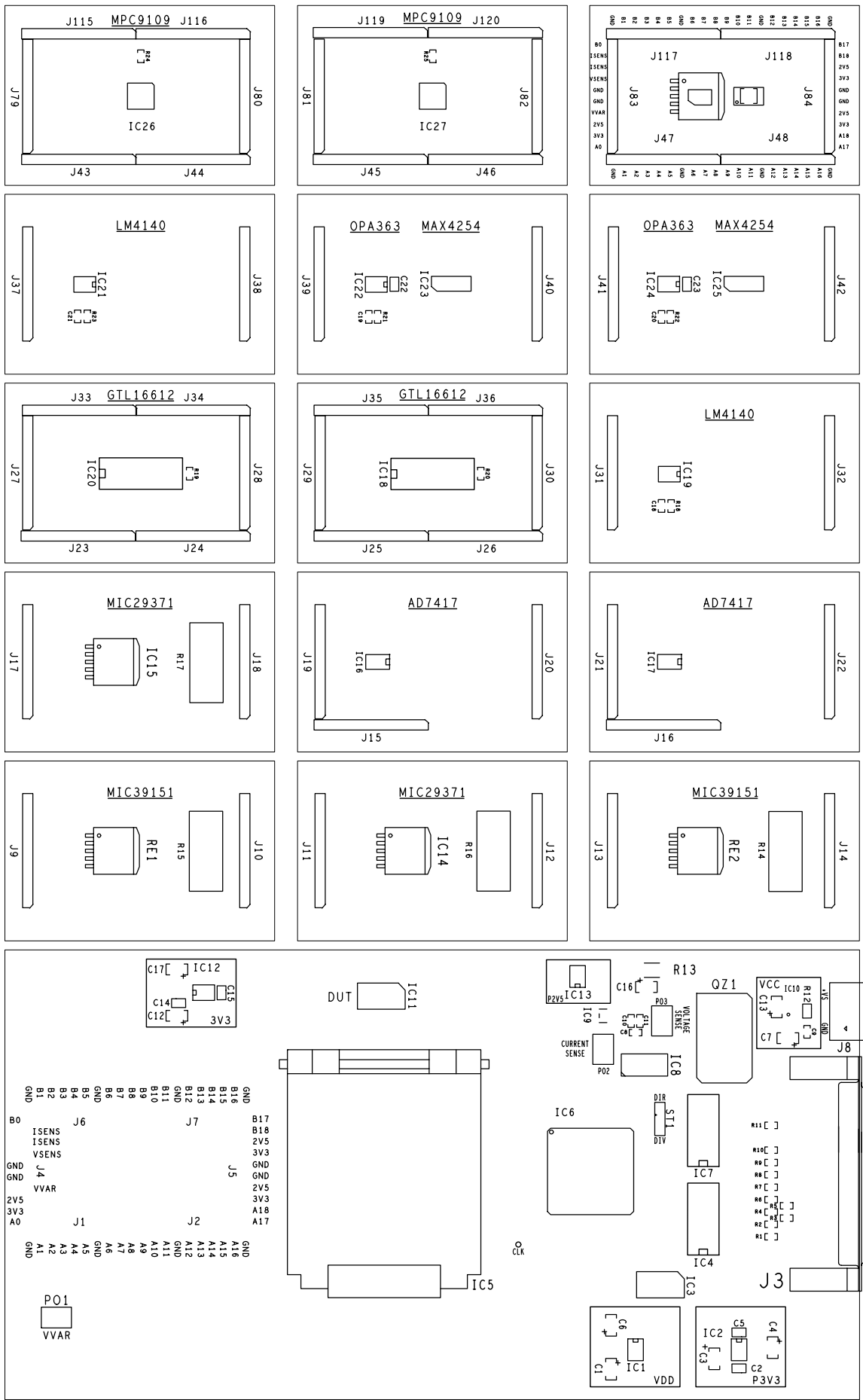



EPED	DATE	S1V0S003	DESIGN	W-2IDE
	DESS	A JUNIQUE		
	EP. DU CI	: 16V10e		
	EP. DU CUIVRE	: 32u		
	NRRE DE COUCHE	: 4		

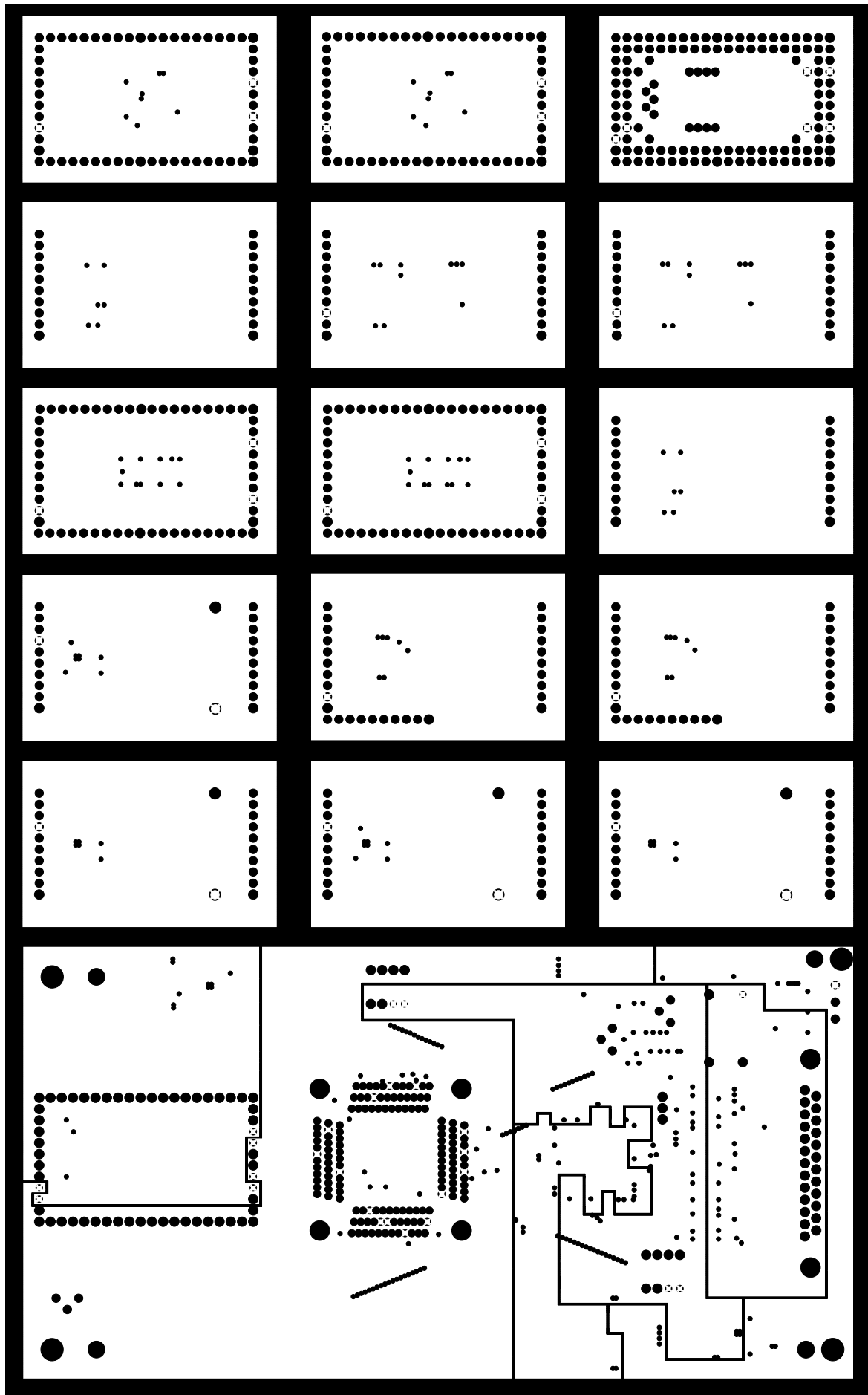





 EP/ED	RADTEST	INDICE 1	NBRE DE COUCHE : 4	LAQUE ARRET DE SOUDURE C-SIDE
	DESS A. JUNIQUE		EP. DU CUIVRE : 35u	
	DATE 21/02/2003		EP. DU CI : 16/10e	
			MATIERE DU CI : EPOXY	



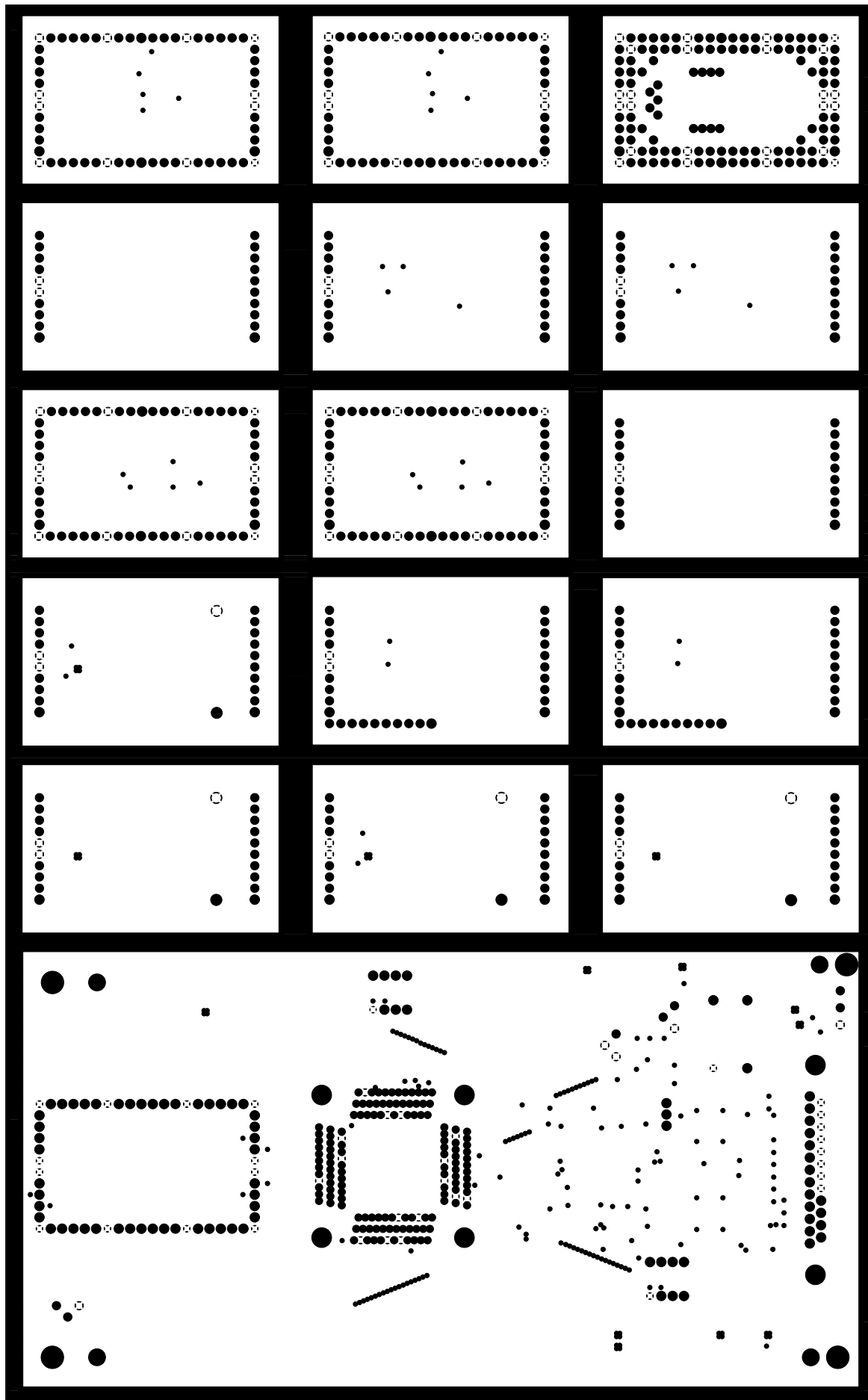
 EP/ED	RADTEST DESS A. JUNIQUE DATE 21/02/2003	INDICE 1 NBRE DE COUCHE : 4 EP. DU CUIVRE : 35µ EP. DU CI : 16/10e MATIERE DU CI : EPOXY	SERIGRAPHIE C-SIDE
--	---	--	--------------------



 EP/ED	RADTEST	INDICE 1	NBRE DE COUCHE : 4
	DESS A. JUNIQUE		EP. DU CUIVRE : 35u
	DATE 21/02/2003		EP. DU CI : 16/10e
			MATIERE DU CI : EPOXY

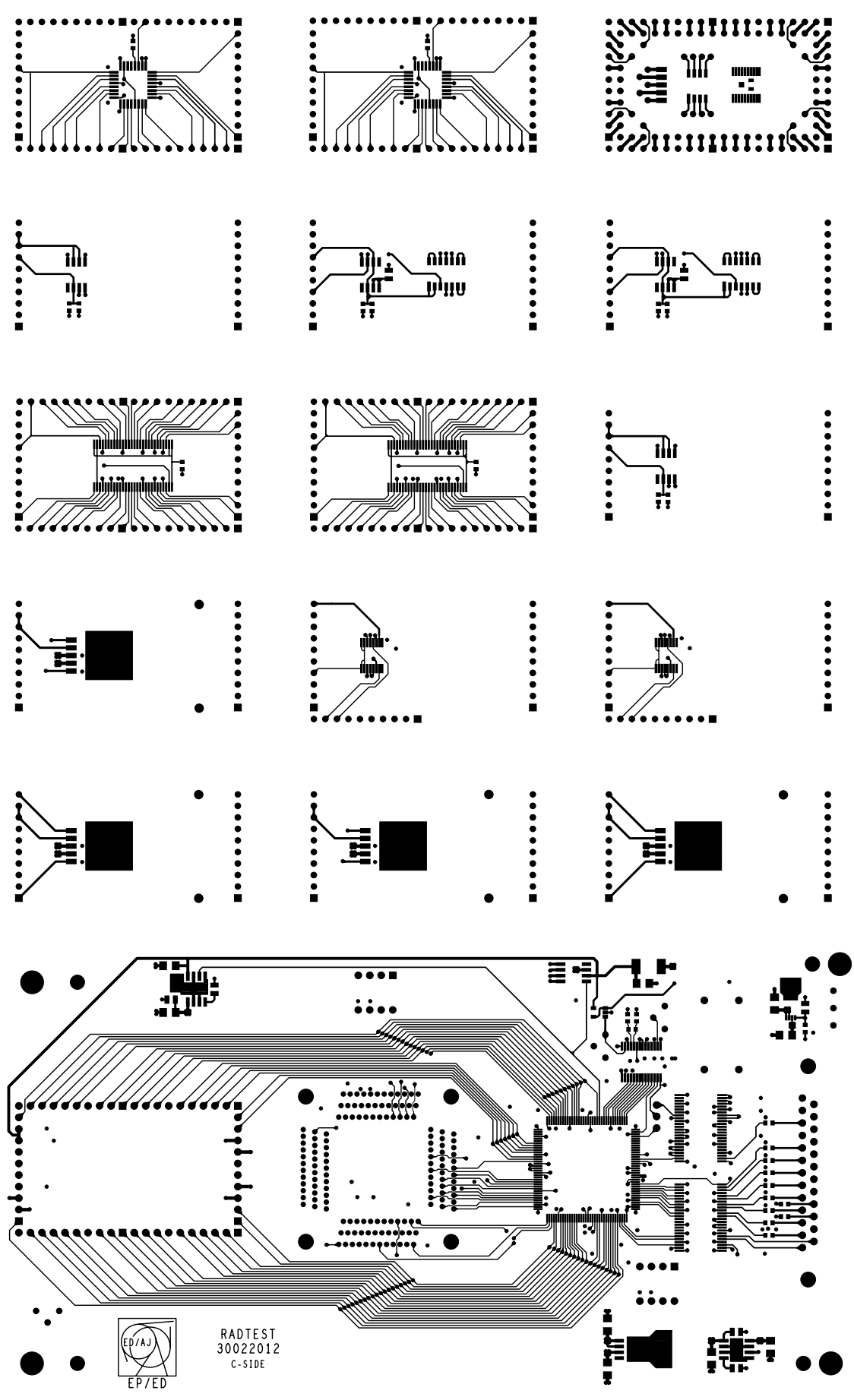
MIJA NAJ9






RADTEST  
DESS A. JUNIQUE  
DATE 21/02/2003

INDICE  
1  
NBRE DE COUCHE : 4  
EP. DU CUIVRE : 35u  
EP. DU CI : 16/10e  
MATIERE DU CI : EPOXY



RADTEST  
30022012  
C-SIDE

 EP/ED	RADTEST	INDICE 1	NBRE DE COUCHE : 4	FACE COMPOSANTS  1
	DESS A. JUNIQUE		EP. DU CUIVRE : 35u	
	DATE 21/02/2003		EP. DU CI : 16/10e	
			MATIERE DU CI : EPOXY	