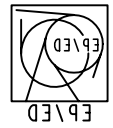


PASA_TEST
3005041
A M-210E

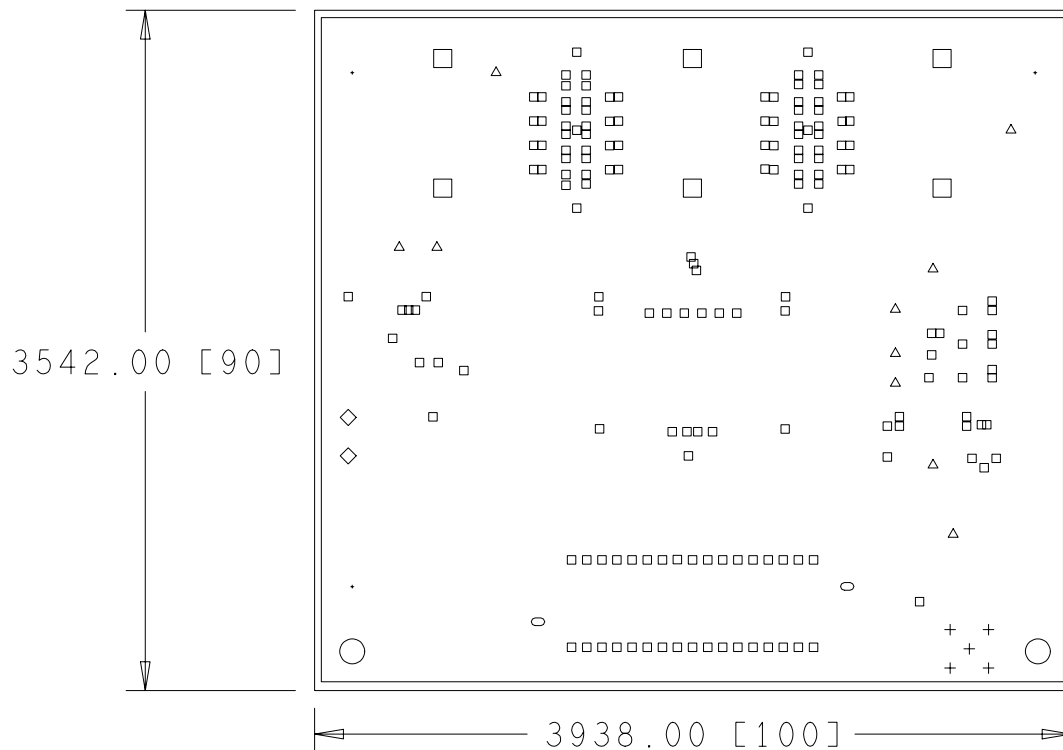


DATE	14\0\5003	MATIERE DU CI	: EPOXY
DESS	A. JUNIQUE	EP DU CI	: 1E\10E
		EP DU CUIVRE	: 32u
		NBRE DE COUCHE	: 4
		INDICE	1
	PASA_TEST		




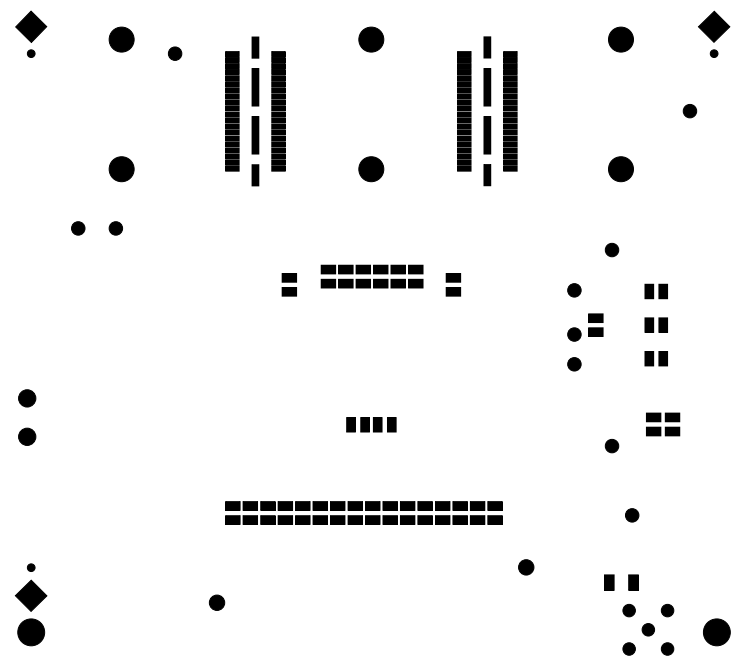
FACE SONDRES

4



DRILL CHART			
ALL UNITS ARE IN MILS			
FIGURE	SIZE	PLATED	QTY
.	16.0	PLATED	3
□	16.0	PLATED	167
+	32.0	PLATED	5
△	36.0	PLATED	10
○	47.0	PLATED	2
◇	59.0	PLATED	2
□	98.0	PLATED	6
○	106.0	PLATED	2

 EP/ED	PASA_TEST	INDICE 1	NBRE DE COUCHE : 4
	DESS A.JUNIQUE		EP. DU CUIVRE : 35u
	DATE 14/07/2003		EP. DU CI : 16/10e
			MATIERE DU CI : EPOXY

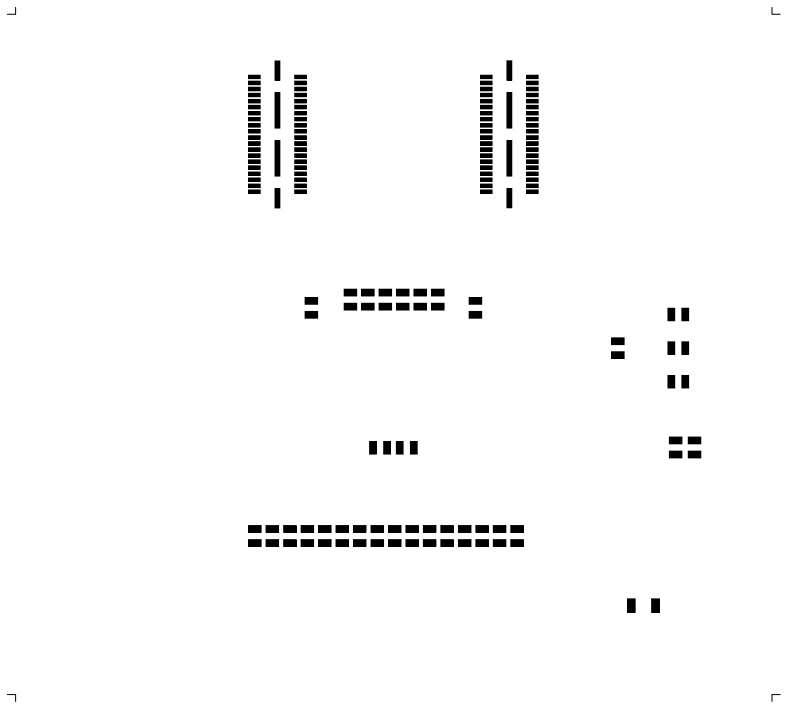


DATE		14\07\2003	MATIERE DU CI	: EPOXY
DES		A. UNIQUE	EP. DU CI	: 16\10e
PASS		TEST	EP. DU CUIVRE	: 32u
INDEX		1	NBRE DE COUCHE	: 4



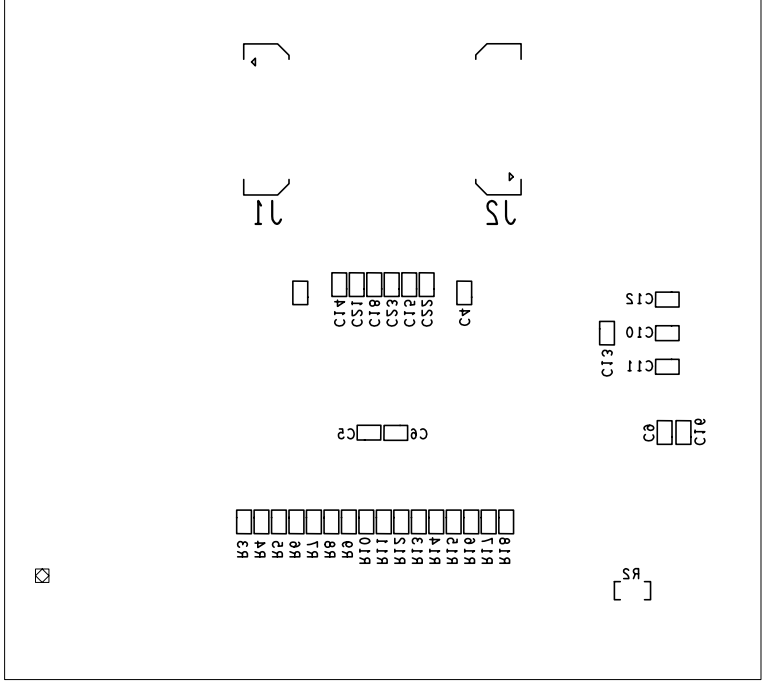
LAQUE ARRET DE SOUDURE W-SIDE

EPVED

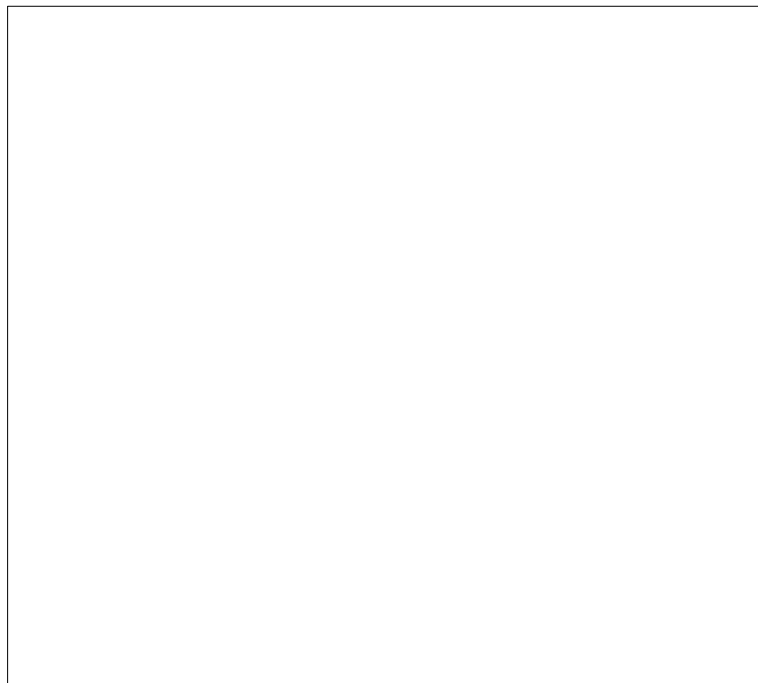


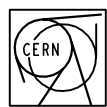
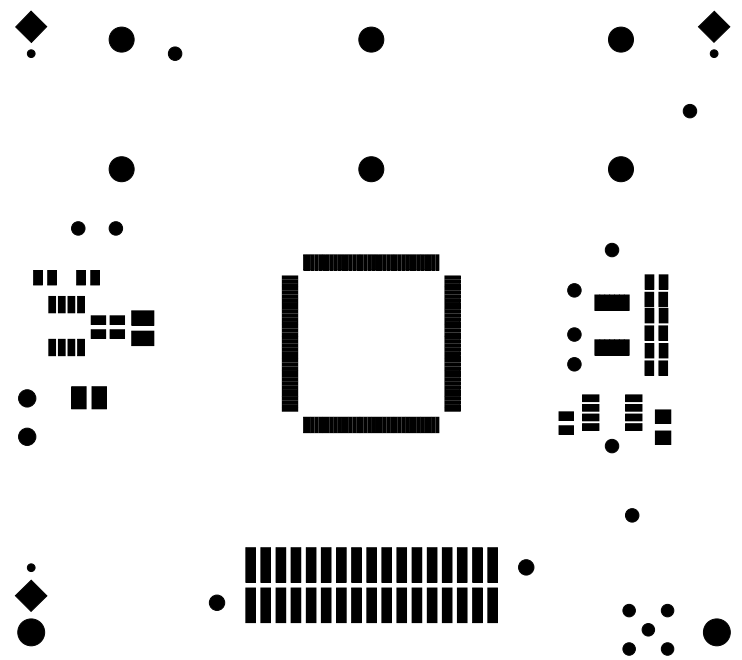
DATE	14\07\2003	DATE	14\07\2003
EPVED		DES	A. JUNIQUE
		EP DU CUIVRE	: 32u
		EP DU CI	: 16\10e
		MATIERE DU CI	: EPOXY
		NBRE DE COUCHE	: 4
		INDICE	1
		PASA_TEST	





EPIVÉD			SERIAPHIE W-SIDE	
DATE	14\01\2003		DES	A. JUNIQUE
EP. DU CI	: 10\10e	EP. DU CUIVRE	: 32u	NBRRE DE COUCHE : 4 INDICE : 1
MATIERE DU CI	: EPOXY	EP. DU CI	: 10\10e	

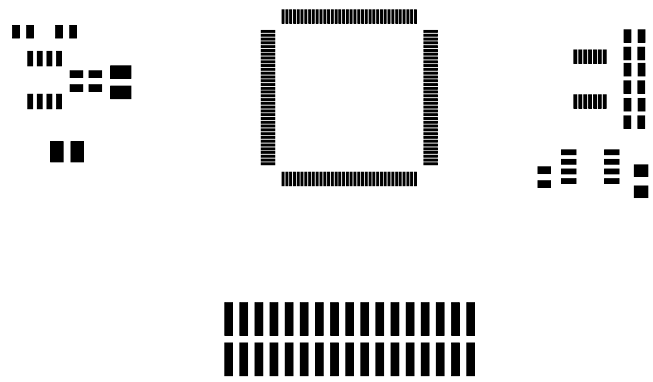





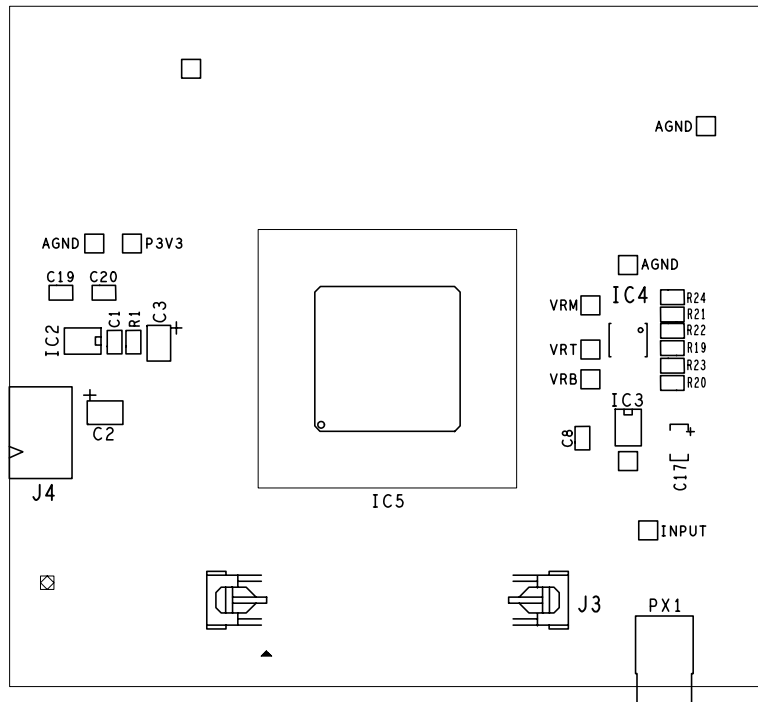
PASA_TEST		INDICE 1	NBRE DE COUCHE : 4
DESS	A.JUNIQUE		EP. DU CUIVRE : 35u
DATE	14/07/2003		EP. DU CI : 16/10e
			MATIERE DU CI : EPOXY

LAQUE ARRET DE SOUDURE C-SIDE

EP/ED

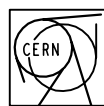
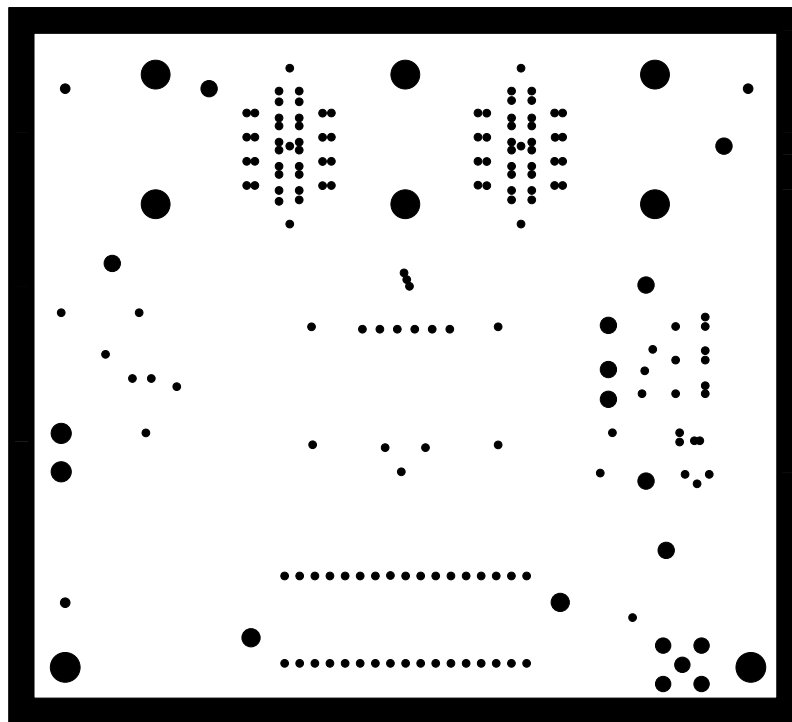


 EP/ED	PASA_TEST		INDICE 1	NBRE DE COUCHE : 4
	DESS	A.JUNIQUE		EP. DU CUIVRE : 35u
	DATE	14/07/2003		EP. DU CI : 16/10e
				MATIERE DU CI : EPOXY



PASA_TEST		INDICE	NBRE DE COUCHE : 4
		1	EP. DU CUIVRE : 35u
DESS	A. JUNIQUE		EP. DU CI : 16/10e
DATE	14/07/2003		MATIERE DU CI : EPOXY

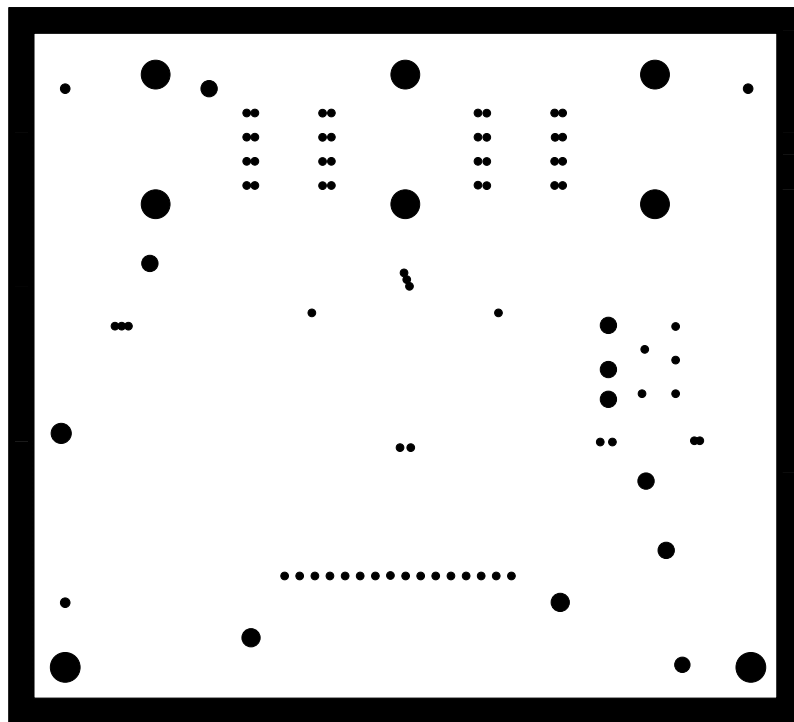
SERIGRAPHIE C-SIDE



PASA_TEST		INDICE 1	NBRE DE COUCHE : 4
DESS	A.JUNIQUE		EP. DU CUIVRE : 35u
DATE	14/07/2003		EP. DU CI : 16/10e
			MATIERE DU CI : EPOXY

2		
---	--	--

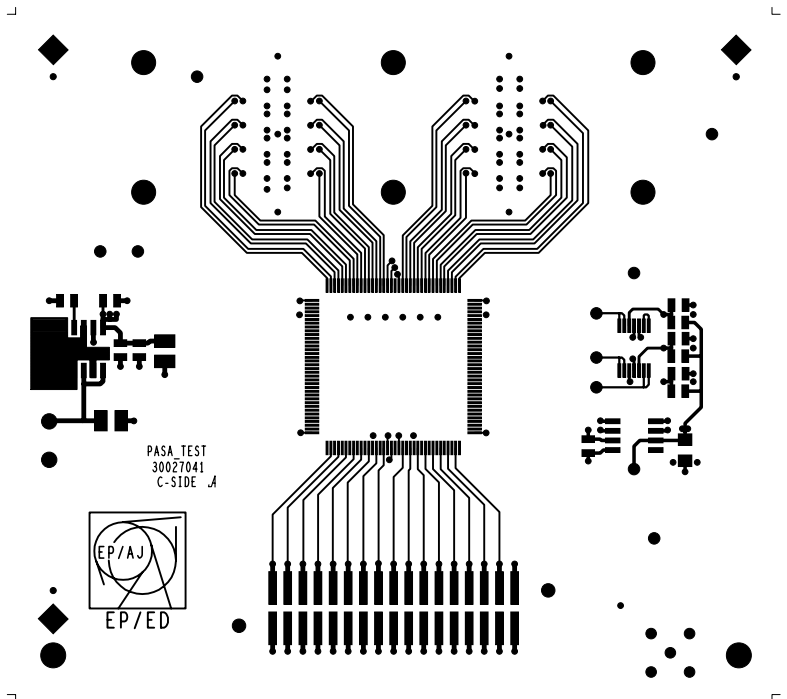
EP/ED



PASA_TEST		INDICE 1	NBRE DE COUCHE : 4
DESS	A.JUNIQUE		EP. DU CUIVRE : 35u
DATE	14/07/2003		EP. DU CI : 16/10e
			MATIERE DU CI : EPOXY

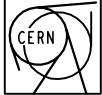
EP/ED

		3	
--	--	---	--



PASA_TEST
30027041
C-SIDE_A



 EP/ED	PASA_TEST		INDICE	NBRE DE COUCHE : 4		FACE COMPOSANTS				
			1	EP. DU CUIVRE : 35u						
	DESS	A.JUNIQUE		EP. DU CI : 16/10e						
	DATE	14/07/2003		MATIERE DU CI : EPOXY						
						<table border="1"> <tr> <td>1</td> <td></td> <td></td> <td></td> </tr> </table>	1			
1										